

DRAWING SET INDEX			
SHT #	REV #	LAST REV	TITLE
1	OF		COVER SHEET
2	OF		SITE PLAN
3	OF		FLOAT RANGE OF MOTION
4	OF		ATTENUATOR FLOAT 1 DETAIL
5	OF		ATTENUATOR FLOAT 2 DETAIL
6	OF		8'x40' HEADWALK FLOAT 1 DETAIL
7	OF		8'x40' HEADWALK FLOAT 2 DETAIL
8	OF		8'x40' HEADWALK FLOAT 3 DETAIL
9	OF		8'x20' GANGWAY FLOAT DETAIL
10	OF		4'x28' FINGER FLOAT DETAIL
11	OF		ORCA CONNECTION DETAIL
12	OF		MAINWALK CONNECTION DETAIL
13	OF		PILE HOOP DETAILS
14	OF		FIXED PIER DETAILS
15	OF		FIXED PIER ABUTMENT
16	OF		FIXED PIER TRANSITION RAMP
17	OF		PILE DETAILS
CONTRACT DRAWING SET			



CHELAN BAY
COMMERCIAL DOCK
CHELAN, WA

TRIPEN INC
Project #

TRANSPAC MARINAS
Project # 2236

June 23, 2022

SYSTEM SPECIFICATIONS:

HDPE PIPE: HIGH DENSITY POLYETHYLENE PIPE (HDPE) SHALL BE GRADE 4710, & CONFORM TO ASTM D3350. THE PIPE SHALL BE STANDARD DIMENSION RATIO (SDR) 32.5 OR AS OTHERWISE NOTED ON THE PLANS.

FOAM BILLETS: SHALL BE VACUUM-MOLDED, RIGID CELLULAR EXPANDED POLYSTYRENE, 1.0 LB. PER CU. FT. NOMINAL DENSITY, MEETING THE REQUIREMENTS OF ASTM SPECIFICATION C-578-85, TYPE I MATERIAL FOR DENSITY, COMPRESSIVE AND FLEXURAL STRENGTH, WATER VAPOR PERMEABILITY, WATER ABSORPTION AND DIMENSION. REGROUND OR REPROCESSED MATERIALS OF UP TO 10%.

DECKING: FIBERGLASS MOLDED MICRO-MESH GRATED DECKING WITH 3/4"x3/4" GRID PATTERN, AND 1 1/2" DEPTH, CONFORMING TO ADA REQUIREMENTS.

PILES: 12" Std STEEL PIPE, A252 GR 3, MIN Fy = 50 KSI. CUTOFF = EL 1106, MIN 27 FT EMBED

STEEL: ALL FRAMING ANGLES, PLATES, AND OTHER STEEL SHAPES SHALL CONFORM TO ASTM A36. WIDE FLANGE BEAMS SHALL BE A992. PIPES SHALL BE A53B.

BOLTS: MINIMUM BOLT DIAMETER SHALL BE 3/4" FOR ALL FRAME CONNECTIONS. BOLTS SHALL MEET ASTM SPECIFICATION A-307, GRADE A, AND BE HOT-DIP GALVANIZED, PER ASTM A-153. STAINLESS HARDWARE SHALL BE TYPE 316.

GALVANIZING: FRAME FOR FLOAT FRAMES SHALL BE HOT DIP GALVANIZED. ALL MISCELLANEOUS STEEL HARDWARE SHALL BE HOT DIP GALVANIZED IN ACCORDANCE WITH ASTM A 123 AND ASTM A 153. ITEMS REQUIRING FABRICATION SHALL BE GALVANIZED AFTER FABRICATION TO A MINIMUM OF 2.0 OZ./SQ.FT

WELDING: WELDERS SHALL BE QUALIFIED AS SPECIFIED IN AWS FOR THE PARTICULAR PROCESS AND PROCEDURE THAT THE WELDER WILL PERFORM. PROCEDURE QUALIFICATION TEST RECORDS FOR THE MATERIAL AND PROCEDURE PERFORMED WILL BE REQUIRED IN ACCORDANCE WITH AWS D1.1.

UHMW-PE: ULTRA HIGH MOLECULAR WEIGHT POLYETHYLENE SHALL BE FABRICATED FROM POLYMER INDUSTRIES, POLYSLICK BR, REPROCESSED WITH A TENSILE STRENGTH OF 3,300 PSI MIN PER ASTM D638.

FLOAT DRUMS: ROTATIONALLY-MOLDED POLYETHYLENE, WITH MINIMUM WALL THICKNESS OF 0.15". FOAM CORE IS CELLULAR POLYSTYRENE, 1.0 LB PER CF PER ASTM C-578-85.

DESIGN SPECIFICATIONS:

WIND: 62 MPH, 3 SECOND GUST

WAVE: SIGNIFICANT WAVE 1.8FT, 2.2 SECOND PERIOD

CURRENT: ONE KNOT

BOAT: 28 & 30' BOATS - TRANSIENT MOORAGE ONLY

LIVE LOAD: 25 PSF

FOR SUBMITTAL 6/23/2022

CONFIDENTIAL:

THESE DRAWINGS AND DETAILS FURNISHED WITH THIS PROPOSAL ARE PROPRIETARY TO TRANSPAC MARINAS, INC. THEY ARE INTENDED FOR REVIEW PURPOSES ONLY BY THOSE WITH STRICTLY DEFINED FIDUCIARY RESPONSIBILITIES OF THE PROJECT OWNER AND OWNERS REPRESENTATIVE. UNDER NO CIRCUMSTANCES MAY THE CONTENTS OF THESE DRAWINGS BE COPIED OR TRANSMITTED TO THIRD PARTIES WITHOUT THE EXPRESS WRITTEN APPROVAL OF TRANSPAC MARINAS, INC.

THIS DRAWING IS THE PROPERTY OF AND CONTAINS INFORMATION WHICH BELONGS TO TRANSPAC MARINAS, INC. IT IS BEING LOANED WITH THE UNDERSTANDING THAT IT MAY NOT BE REPRODUCED OR USED IN ANY WAY THAT WOULD BE INJURIOUS TO TRANSPAC'S INTERESTS. DETAILS MAY BE PROTECTED UNDER ONE OR MORE OF THE FOLLOWING U.S. PATENTS: 4,709,647 -4,887,654 -4,940,021 -5,347,948 -5,529,012 -6,450,737 -7,390,141 -8,136,468 -8,287,208 -8,308,397 -8,317,429 -8,506,205

REV	BY	DATE	DESCRIPTION

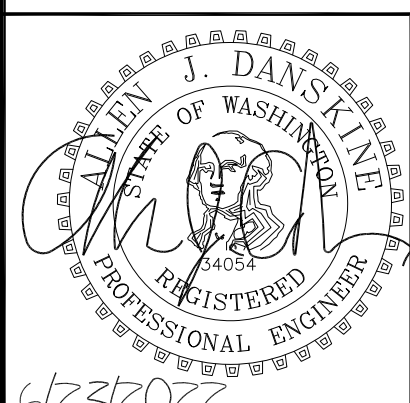
AJD
ENGINEERING
p (360) 770-1746
f (360) 766-6013
allen@ajdengineering.com

TRANSPAC
MARINAS
P.O. BOX 1169
ANACORTES
WASHINGTON
U.S.A. 98221
(360) 293-8888

CHELAN BAY
COMMERCIAL DOCK, CHELAN, WA
COVER SHEET

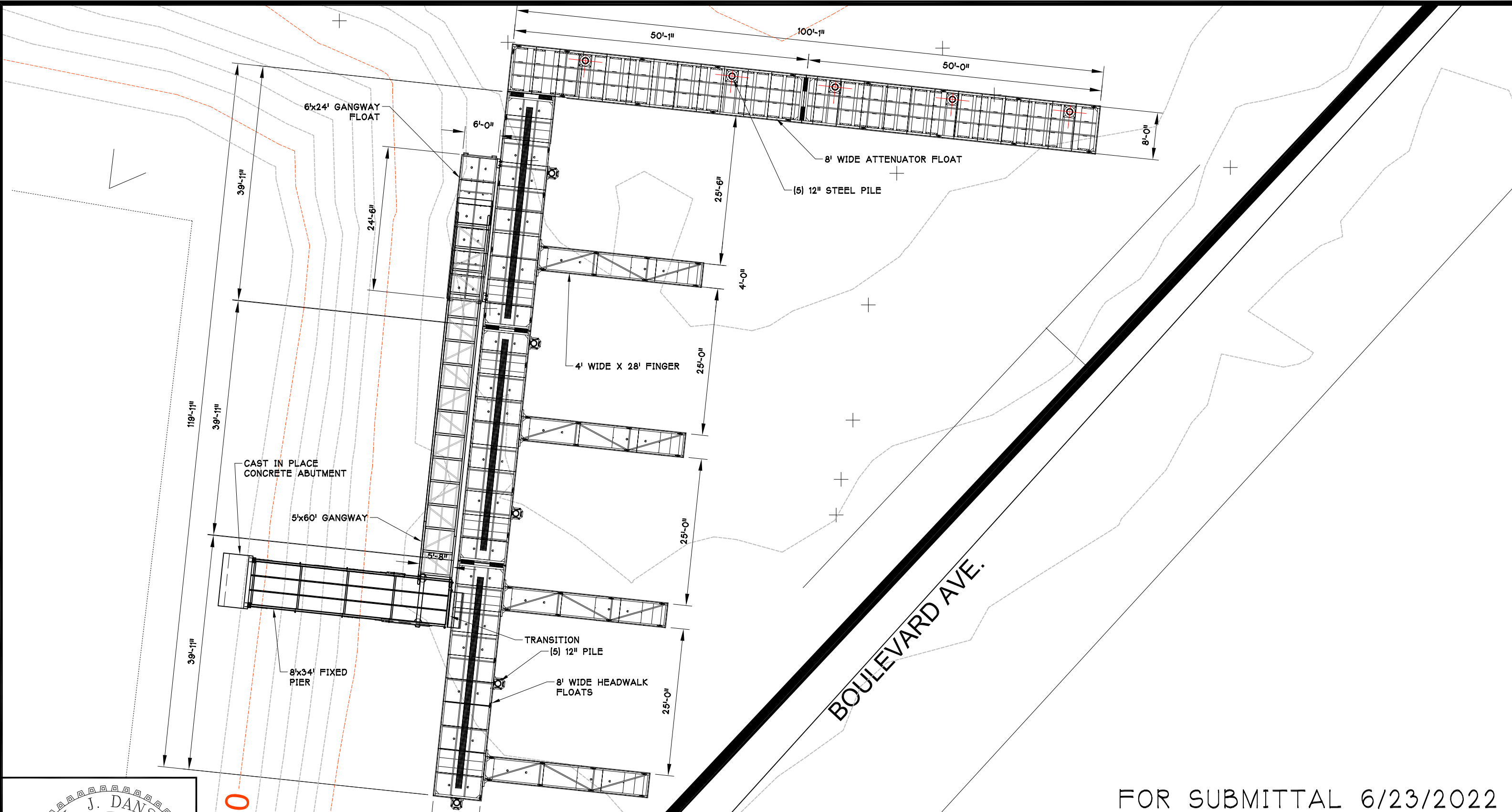
DATE: JUN 2022	JOB NO. 2236	SHEET: OF 1 ^	REVISED: -
DRAWN BY: AJD		CHECKED BY: AJD	APPROVED BY: DJJ

DRAWING Not For Distribution

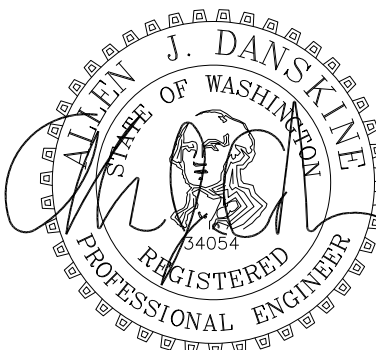


6/23/2022

DRAWING Not For Distribution



FOR SUBMITTAL 6/23/2022



1100

REV	BY	DATE	DESCRIPTION

AJD
ENGINEERING

p (360) 770-1746
f (360) 766-6013
allen@ajdengineering.com

TRANSPAC
MARINAS

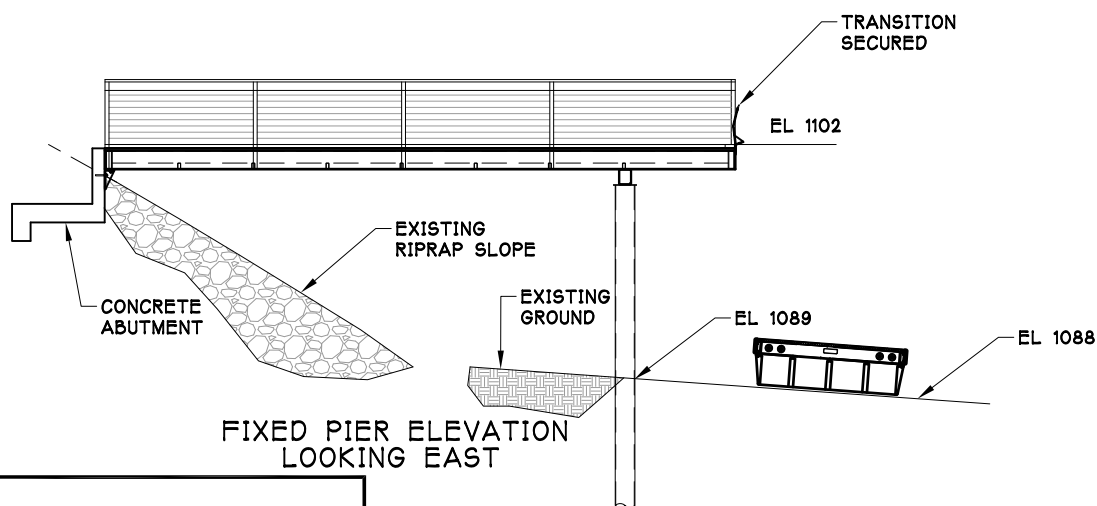
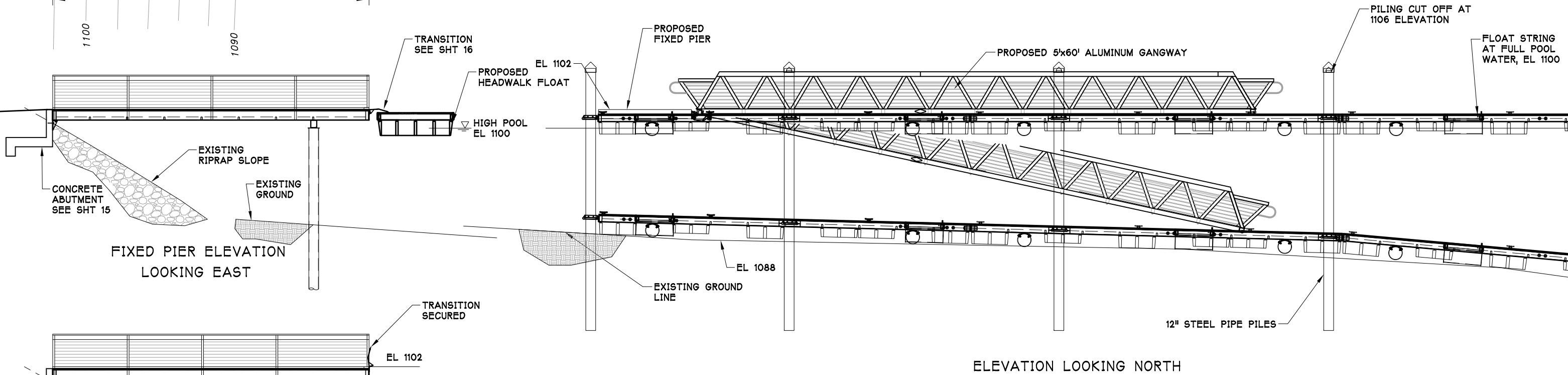
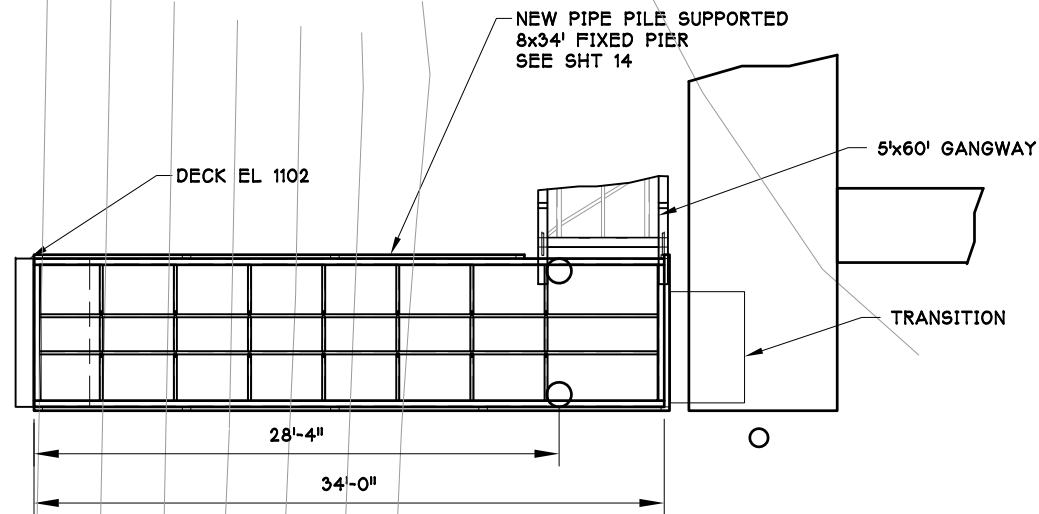
CHELAN BAY
COMMERCIAL DOCK, CHELAN, WA
FLOAT LAYOUT
SITE PLAN

P.O. BOX 1169
ANACORTES
WASHINGTON
U.S.A. 98221
(360) 293-8888

DATE: JUNE 2022	JOB NO. 2236	SHEET: 2 OF 4	REVISED:
DRAWN BY: AJD	CHECKED BY: AJD	APPROVED BY: DJJ	

THIS DRAWING IS THE PROPERTY OF AND CONTAINS INFORMATION WHICH BELONGS TO TRANSPAC MARINAS, INC. IT IS BEING LOANED WITH THE UNDERSTANDING THAT IT MAY NOT BE REPRODUCED OR USED IN ANY WAY THAT WOULD BE INJURIOUS TO TRANSPAC'S INTERESTS. DETAILS MAY BE PROTECTED UNDER ONE OR MORE OF THE FOLLOWING U.S. PATENTS: 4,709,647 -4,887,654 -4,940,021 -5,347,948 -5,529,012 -6,450,737 -7,390,141 -8,136,468 -8,287,208 -8,308,397 -8,317,429 -8,506,205

6/23/2022



FOR SUBMITTAL 6/23/2022

REV	BY	DATE	DESCRIPTION

AJD
ENGINEERING

p (360) 770-1746
f (360) 766-6013
allen@ajdengeering.com

TRANSPAC
MARINAS

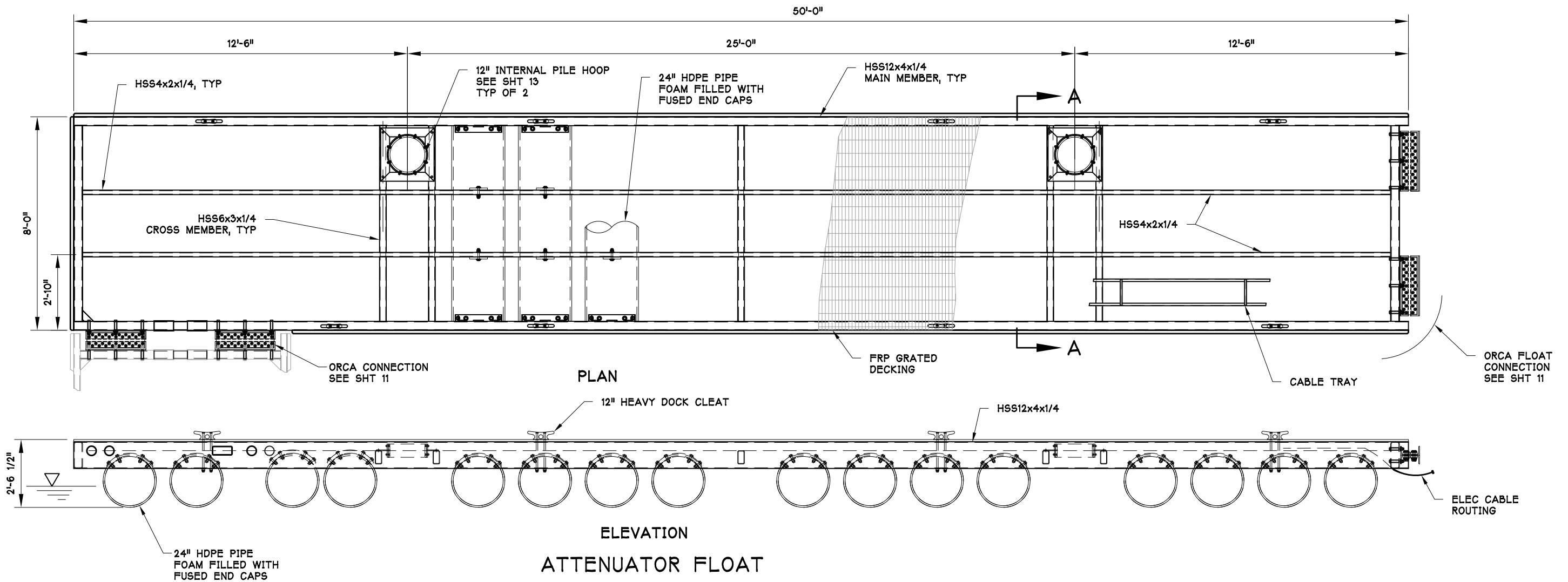
P.O. BOX 1169
ANACORTES
WASHINGTON
U.S.A. 98221
(360) 293-8888

CHELAN BAY
COMMERCIAL DOCK, CHELAN, WA
FLOAT RANGE OF
MOTION

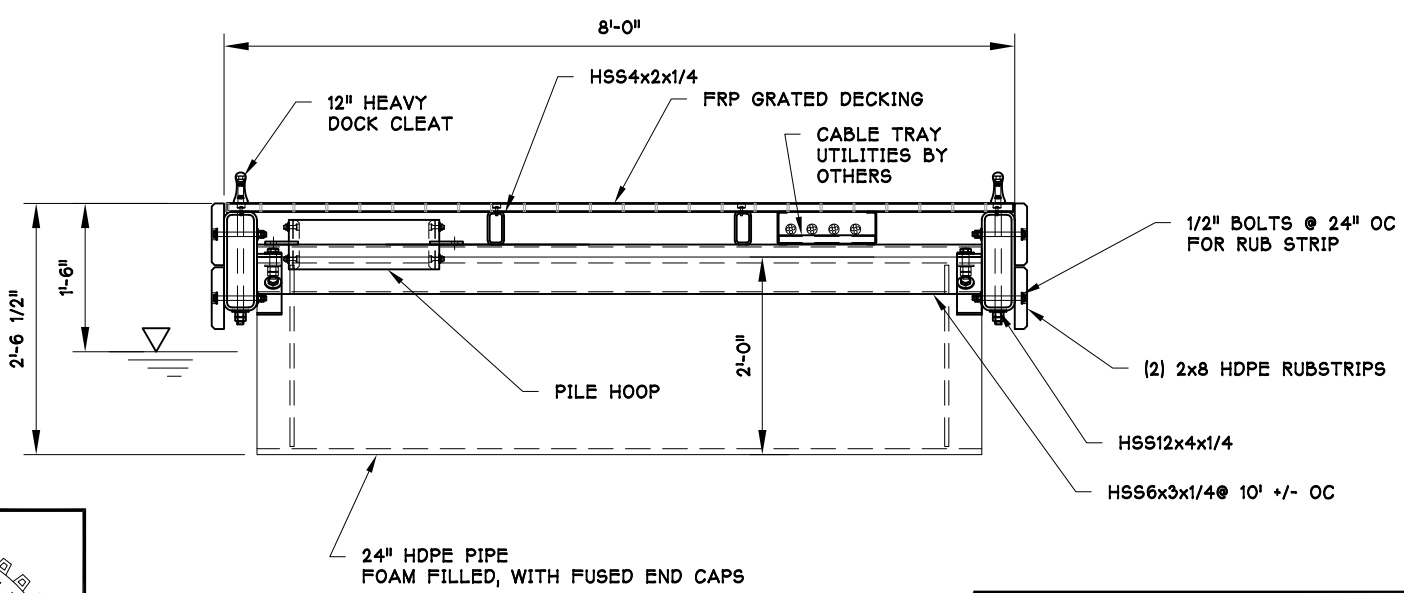
DATE: JUNE 2022	JOB NO. 2236	SHEET: 3 OF 4	REVISED:
DRAWN BY: AJD	CHECKED BY: AJD	APPROVED BY: DJJ	

THIS DRAWING IS THE PROPERTY OF AND CONTAINS INFORMATION WHICH BELONGS TO TRANSPAC MARINAS, INC. IT IS BEING LOANED WITH THE UNDERSTANDING THAT IT MAY NOT BE REPRODUCED OR USED IN ANY WAY THAT WOULD BE INJURIOUS TO TRANSPAC'S INTERESTS. DETAILS MAY BE PROTECTED UNDER ONE OR MORE OF THE FOLLOWING U.S. PATENTS: 4,709,647 -4,887,654 -4,940,021 -5,347,948 -5,529,012 -6,450,737 -7,390,141 -8,136,468 -8,287,208 -8,308,397 -8,317,429 -8,506,205

DRAWING Not For Distribution



ATTENUATOR FLOAT

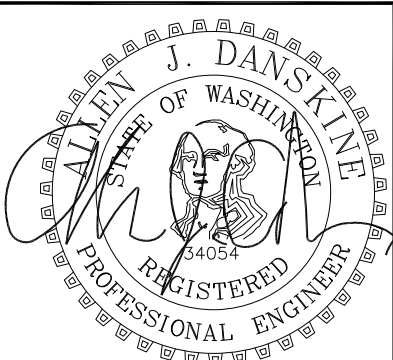


A - A

NOTES:
 FREEBOARD: 16"
 TOTAL FLOAT WEIGHT: 11,400 LBS
 LIVE LOAD CAPACITY: 25 PSF
 MATERIAL: A36 STEEL SHAPES, A500B TUBES
 COATING: HOT DIP GALVANIZE AFTER FABRICATION

FOR SUBMITTAL 6/23/2022

DRAWING Not For Distribution



THIS DRAWING IS THE PROPERTY OF AND CONTAINS INFORMATION WHICH BELONGS TO TRANSPAC MARINAS, INC. IT IS BEING LOANED WITH THE UNDERSTANDING THAT IT MAY NOT BE REPRODUCED OR USED IN ANY WAY THAT WOULD BE INJURIOUS TO TRANSPAC'S INTERESTS. DETAILS MAY BE PROTECTED UNDER ONE OR MORE OF THE FOLLOWING U.S. PATENTS: 4,709,647 -4,887,654 -4,940,021 -5,347,948 -5,529,012 -6,450,737 -7,390,141 -8,136,468 -8,287,208 -8,308,397 -8,317,429 -8,506,205

REV	BY	DATE	DESCRIPTION

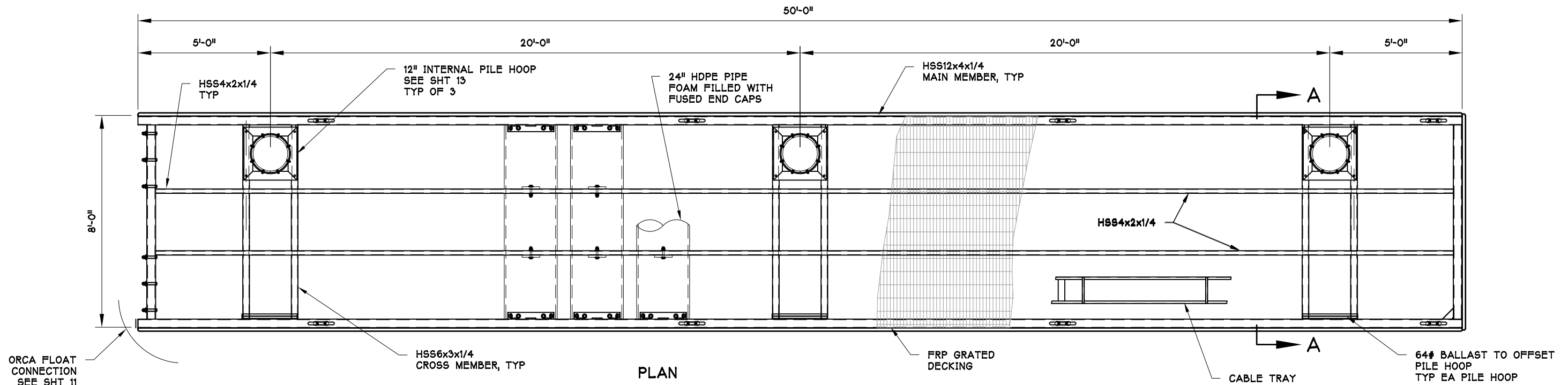
AJD
ENGINEERING
 p (360) 770-1746
 f (360) 766-6013
 allen@ajdengineering.com

TRANSPAC
MARINAS
 P.O. BOX 1169
 ANACORTES
 WASHINGTON
 U.S.A. 98221
 (360) 293-8888

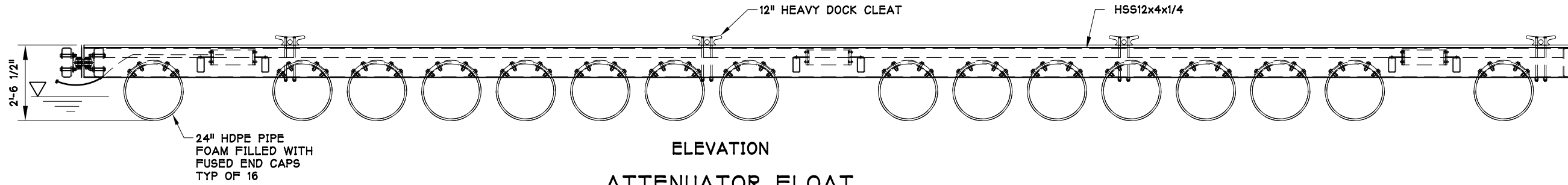
CHELAN BAY
 COMMERCIAL DOCK, CHELAN, WA
 ATTENUATOR FLOAT 1
 DETAIL

DATE: JUNE 2022	JOB NO. 2236	SHEET: 4 OF 4	REVISED: -
DRAWN BY: AJD	CHECKED BY: AJD	APPROVED BY: DJJ	

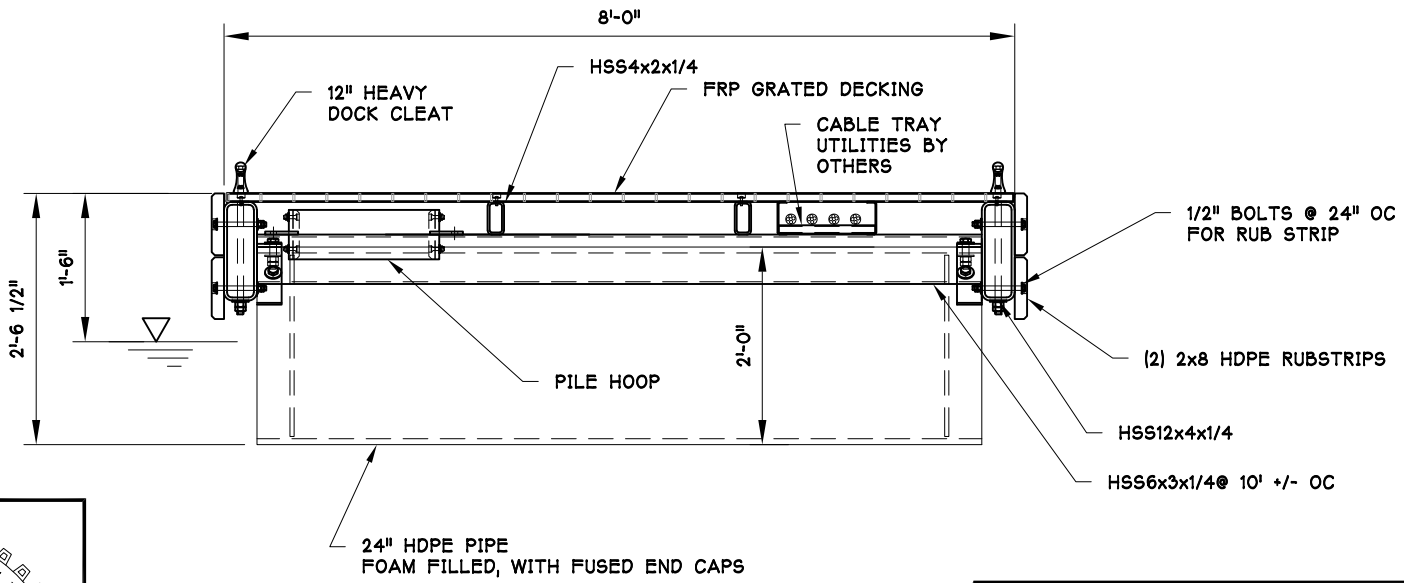
6/23/2022



PLAN



ELEVATION
ATTENUATOR FLOAT

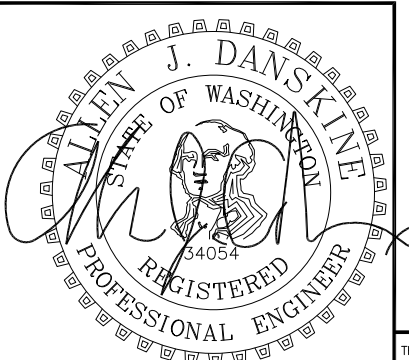


A - A

NOTES:
 FREEBOARD: 16"
 TOTAL FLOAT WEIGHT: 12,000 LBS
 LIVE LOAD CAPACITY: 25 PSF
 MATERIAL: A36 STEEL SHAPES, A500B TUBES
 COATING: HOT DIP GALVANIZE AFTER FABRICATION

FOR SUBMITTAL 6/23/2022

DRAWING Not For Distribution



THIS DRAWING IS THE PROPERTY OF AND CONTAINS INFORMATION WHICH BELONGS TO TRANSPAC MARINAS, INC. IT IS BEING LOANED WITH THE UNDERSTANDING THAT IT MAY NOT BE REPRODUCED OR USED IN ANY WAY THAT WOULD BE INJURIOUS TO TRANSPAC'S INTERESTS. DETAILS MAY BE PROTECTED UNDER ONE OR MORE OF THE FOLLOWING U.S. PATENTS: 4,709,647 -4,887,654 -4,940,021 -5,347,948 -5,529,012 -6,450,737 -7,390,141 -8,136,468 -8,287,208 -8,308,397 -8,317,429 -8,506,205

REV	BY	DATE	DESCRIPTION

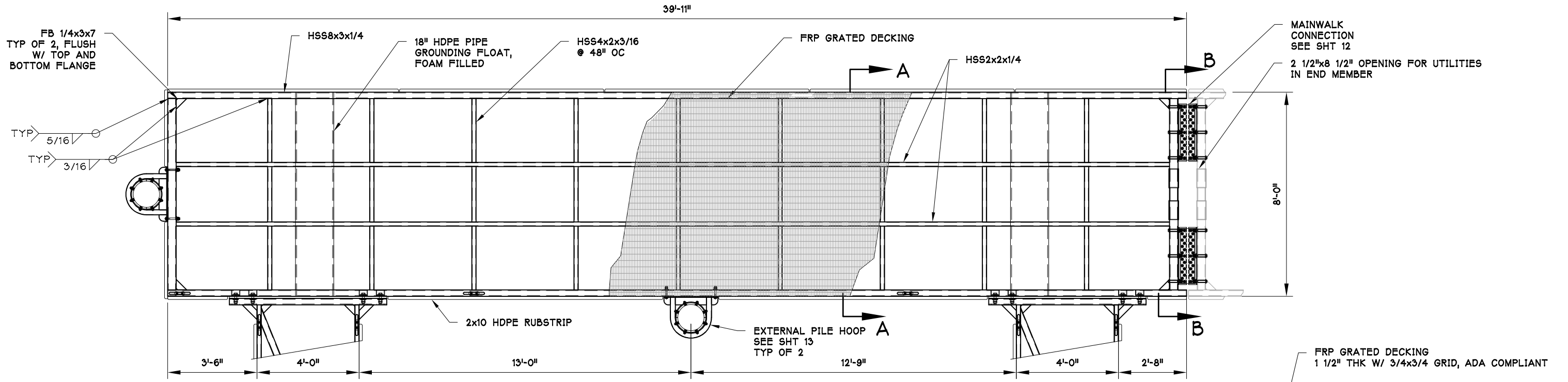
AJD
ENGINEERING
 p (360) 770-1746
 f (360) 766-6013
 allen@ajdengineering.com

TRANSPAC
MARINAS
 P.O. BOX 1169
 ANACORTES
 WASHINGTON
 U.S.A. 98221
 (360) 293-8888

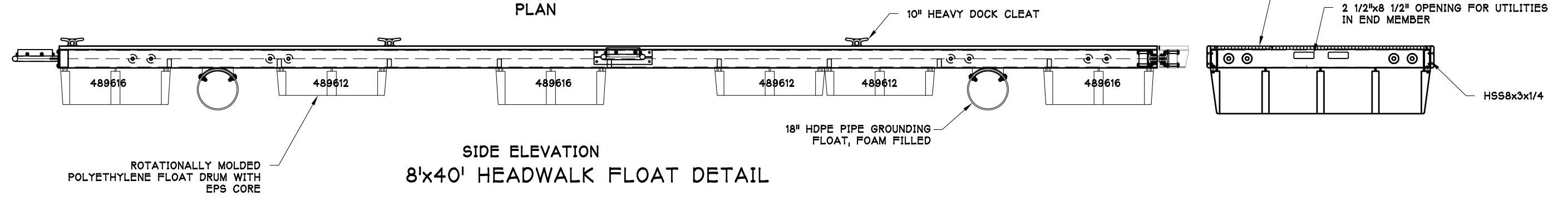
CHELAN BAY
 COMMERCIAL DOCK, CHELAN, WA
 ATTENUATOR FLOAT 2
 DETAIL

DATE: JUNE 2022	JOB NO. 2236	SHEET: 5 OF 5	REVISED: -
DRAWN BY: AJD	CHECKED BY: AJD	APPROVED BY: DJJ	

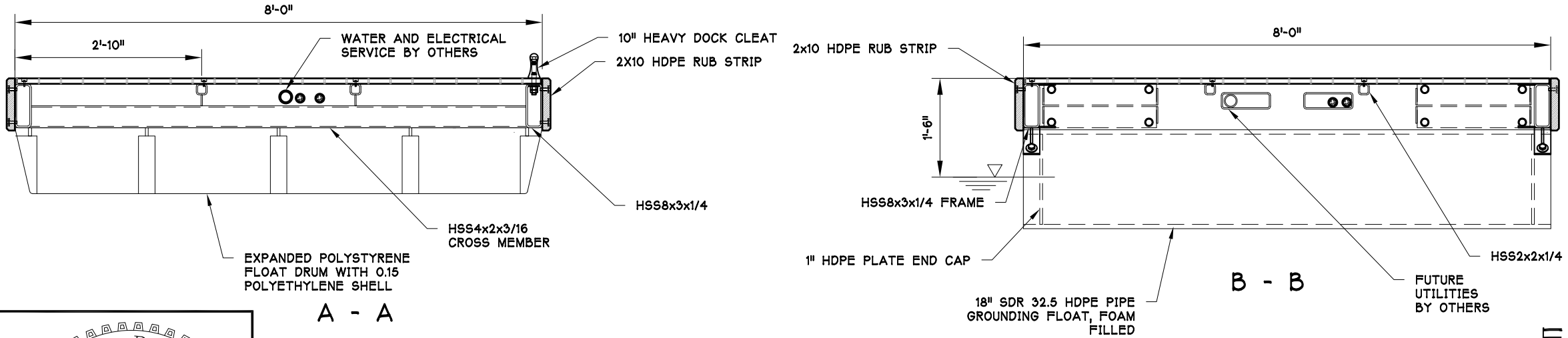
6/23/2022



PLAN



SIDE ELEVATION
8'x40' HEADWALK FLOAT DETAIL

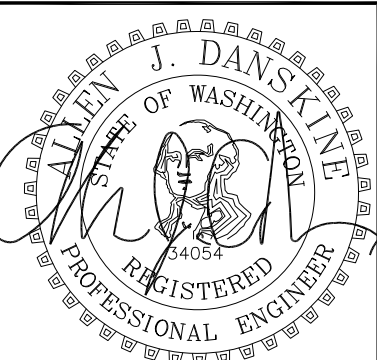


A - A

B - B

NOTES:
 COATING: HOT DIP GALVANIZE AFTER FABRICATION IN ACCORDANCE WITH ASTM A 123 AND ASTM A 153. TO A MINIMUM OF 2.0 OZ./SQ.FT
 DEAD LOAD FREEBOARD: 18" +/-
 LIVE LOAD FREEBOARD: 2" AT 25 PSF
 MATERIALS:
 SHAPES AND PLATES - A36
 HSS - A500B
 BOLTS - A325, A307
 HDPE PIPE: GRADE 4710 (PE3408) PER ASTM 03350, SDR 32.5
 FLOTATION FOAM: VACUUM-MOLDED, RIGID CELLULAR EXPANDED POLYSTYRENE, 1.0 LB/CF
 FLOAT DRUM: ROTATIONALLY-MOLDED POLYETHYLENE, WITH MINIMUM WALL THICKNESS OF 0.15". FOAM CORE IS CELLULAR POLYSTYRENE 1.0 LB PER CF PER ASTM C-578-85

FOR SUBMITTAL 6/23/2022



DRAWING Not For Distribution

REV	BY	DATE	DESCRIPTION

AJD
ENGINEERING
 p (360) 770-1746
 f (360) 766-6013
 allen@ajdengineering.com

TRANSPAC
MARINAS

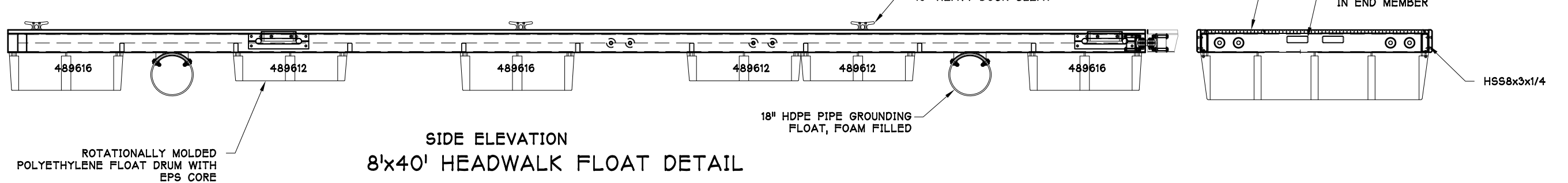
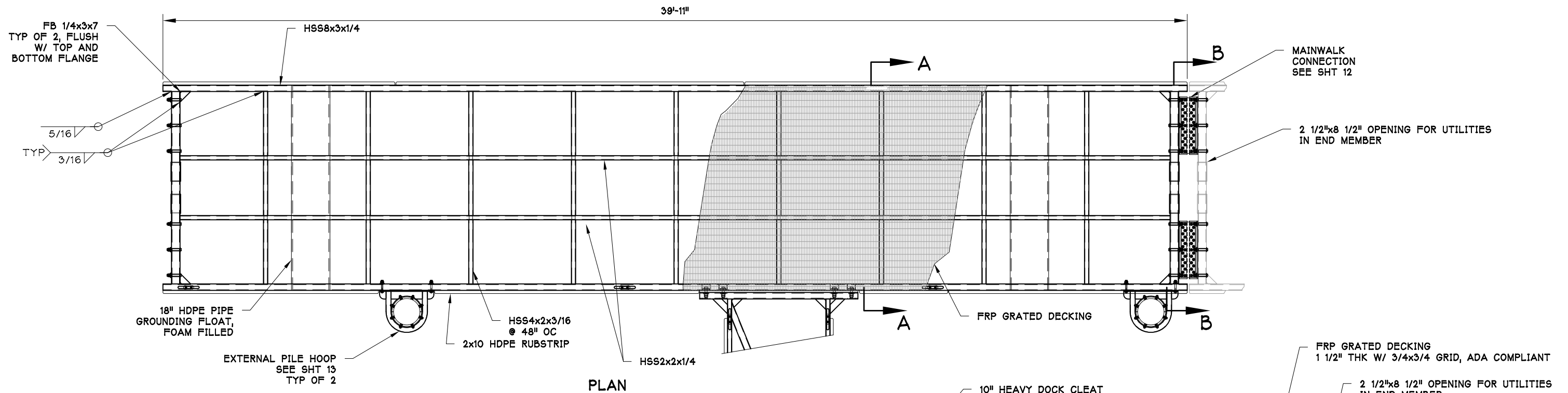
CHELAN BAY
COMMERCIAL DOCK, CHELAN, WA
8'x40' HEADWALK
FLOAT 1 DETAIL

P.O. BOX 1169
ANACORTES
WASHINGTON
U.S.A. 98221
(360) 293-8888

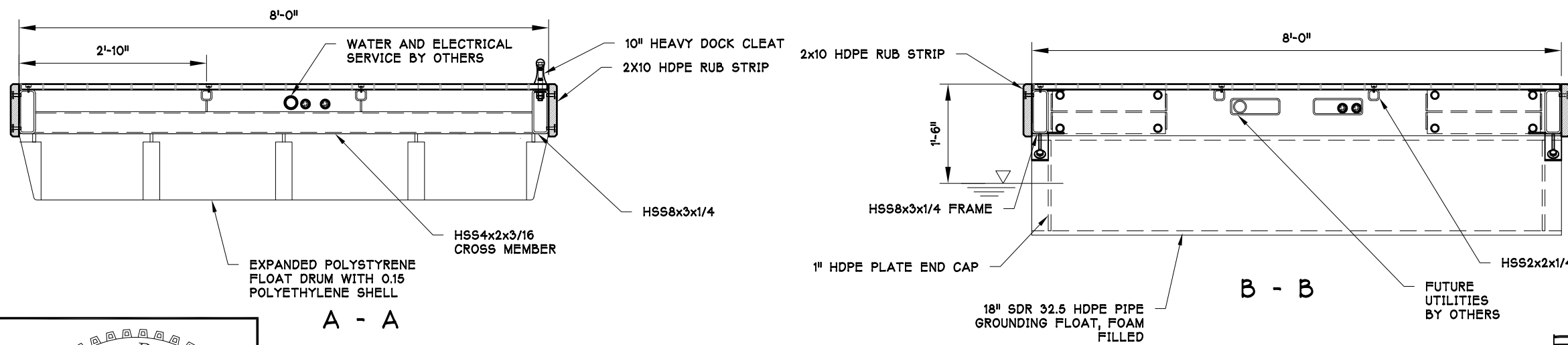
DATE: JUNE 2022	JOB NO. 2236	SHEET: 6 OF 6	REVISED: -
DRAWN BY: AJD	CHECKED BY: AJD	APPROVED BY: DJJ	

THIS DRAWING IS THE PROPERTY OF AND CONTAINS INFORMATION WHICH BELONGS TO TRANSPAC MARINAS, INC. IT IS BEING LOANED WITH THE UNDERSTANDING THAT IT MAY NOT BE REPRODUCED OR USED IN ANY WAY THAT WOULD BE INJURIOUS TO TRANSPAC'S INTERESTS. DETAILS MAY BE PROTECTED UNDER ONE OR MORE OF THE FOLLOWING U.S. PATENTS: 4,709,647 -4,887,654 -4,940,021 -5,347,948 -5,529,012 -6,450,737 -7,390,141 -8,136,468 -8,287,208 -8,308,397 -8,317,429 -8,506,205

6/23/2022



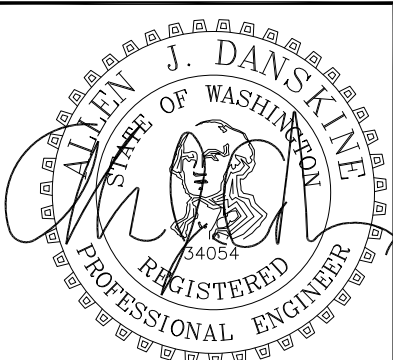
8'x40' HEADWALK FLOAT DETAIL



NOTES:
 COATING: HOT DIP GALVANIZE AFTER FABRICATION IN ACCORDANCE WITH ASTM A 123 AND ASTM A 153. TO A MINIMUM OF 2.0 OZ./SQ.FT
 DEAD LOAD FREEBOARD: 18" +/-
 LIVE LOAD FREEBOARD: 2" AT 25 PSF
 MATERIALS:
 SHAPES AND PLATES - A36
 HSS - A500B
 BOLTS - A325, A307
 HDPE PIPE: GRADE 4710 (PE3408) PER ASTM 03350, SDR 32.5.
 FLOTATION FOAM: VACUUM-MOLDED, RIGID CELLULAR EXPANDED POLYSTYRENE, 1.0 LB/CF
 FLOAT DRUM: ROTATIONALLY-MOLDED POLYETHYLENE, WITH MINIMUM WALL THICKNESS OF 0.15". FOAM CORE IS CELLULAR POLYSTYRENE 1.0 LB PER CF PER ASTM C-578-85

FOR SUBMITTAL 6/23/2022

DRAWING Not For Distribution



REV	BY	DATE	DESCRIPTION

AJD
ENGINEERING
 p (360) 770-1746
 f (360) 766-6013
 allen@ajdengineering.com

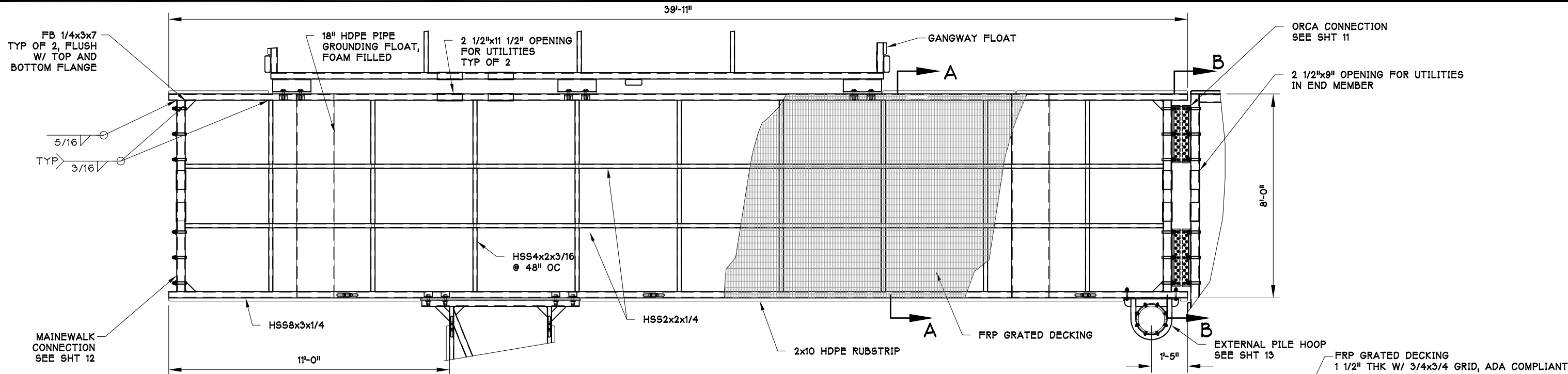
TRANSPAC
MARINAS

CHELAN BAY
COMMERCIAL DOCK, CHELAN, WA
8'x40' HEADWALK
FLOAT 2 DETAIL

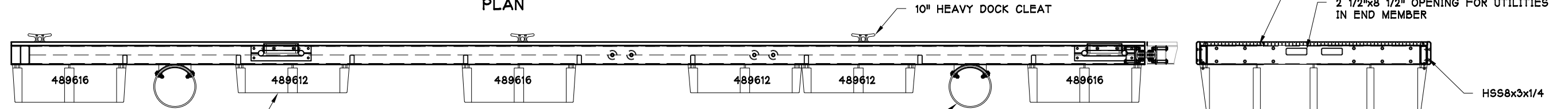
DATE: JUNE 2022	JOB NO. 2236	SHEET: 7 OF 7	REVISED: -
DRAWN BY: AJD	CHECKED BY: AJD	APPROVED BY: DJJ	

THIS DRAWING IS THE PROPERTY OF AND CONTAINS INFORMATION WHICH BELONGS TO TRANSPAC MARINAS, INC. IT IS BEING LOANED WITH THE UNDERSTANDING THAT IT MAY NOT BE REPRODUCED OR USED IN ANY WAY THAT WOULD BE INJURIOUS TO TRANSPAC'S INTERESTS. DETAILS MAY BE PROTECTED UNDER ONE OR MORE OF THE FOLLOWING U.S. PATENTS: 4,709,647 -4,887,654 -4,940,021 -5,347,948 -5,529,012 -6,450,737 -7,390,141 -8,136,468 -8,287,208 -8,308,397 -8,317,429 -8,506,205

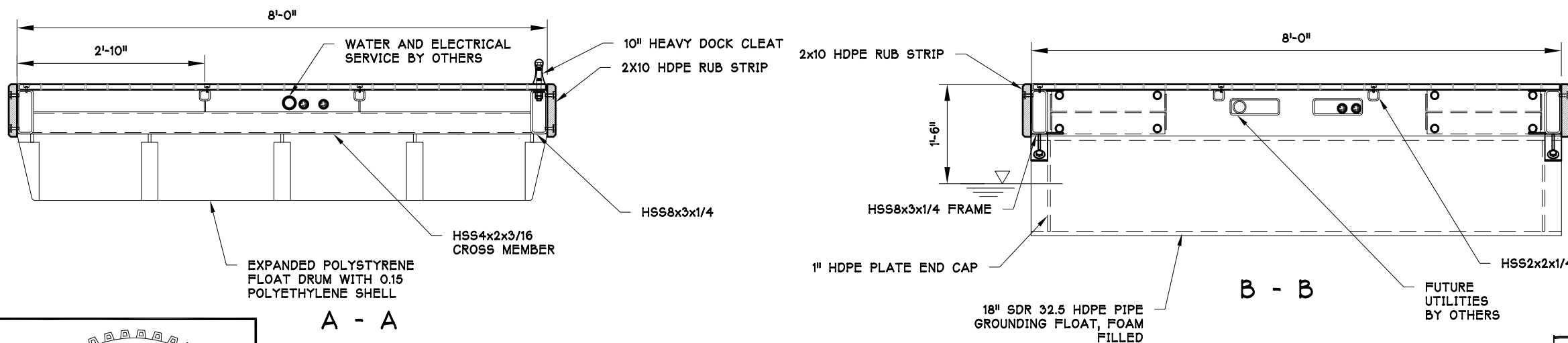
6/23/2022



PLAN



SIDE ELEVATION
8'x40' HEADWALK FLOAT DETAIL

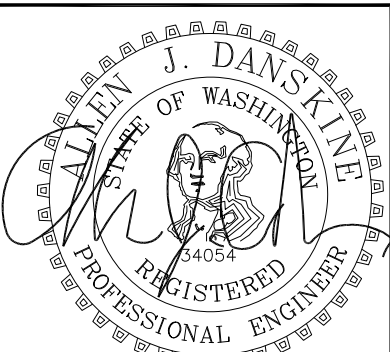


A - A

B - B

- NOTES:**
- COATING: HOT DIP GALVANIZE AFTER FABRICATION IN ACCORDANCE WITH ASTM A 123 AND ASTM A 153. TO A MINIMUM OF 2.0 OZ./SQ.FT
 - DEAD LOAD FREEBOARD: 18" +/-
 - LIVE LOAD FREEBOARD: 2" AT 25 PSF
 - MATERIALS:
 - SHAPES AND PLATES - A36
 - HSS - A500B
 - BOLTS - A325, A307
 - HDPE PIPE: GRADE 4710 (PE3408) PER ASTM D3350, SDR 32.5.
 - FLOTATION FOAM: VACUUM-MOLDED, RIGID CELLULAR EXPANDED POLYSTYRENE, 1.0 LB/CF
 - FLOAT DRUM: ROTATIONALLY-MOLDED POLYETHYLENE, WITH MINIMUM WALL THICKNESS OF 0.15". FOAM CORE IS CELLULAR POLYSTYRENE 1.0 LB PER CF PER ASTM C-578-85

FOR SUBMITTAL 6/23/2022



DRAWING Not For Distribution

REV	BY	DATE	DESCRIPTION

AJD
ENGINEERING

p (360) 770-1746
f (360) 766-6013
allen@ajdengineering.com

TRANSPAC
MARINAS

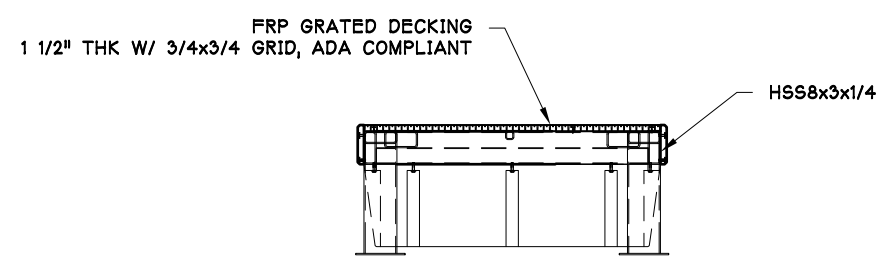
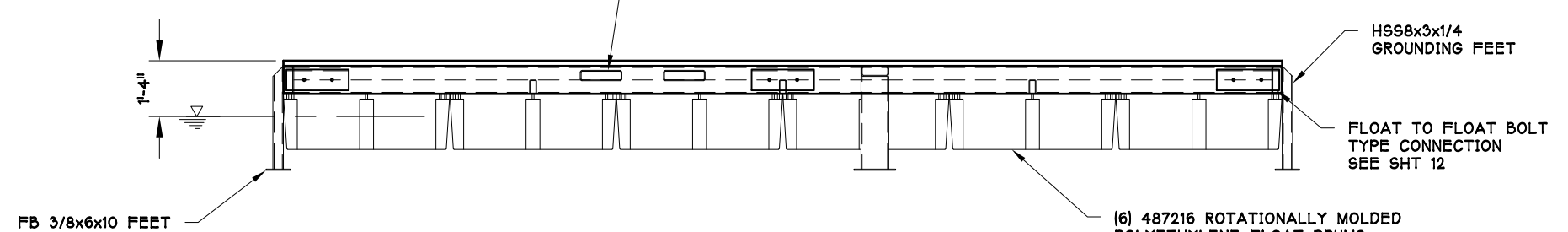
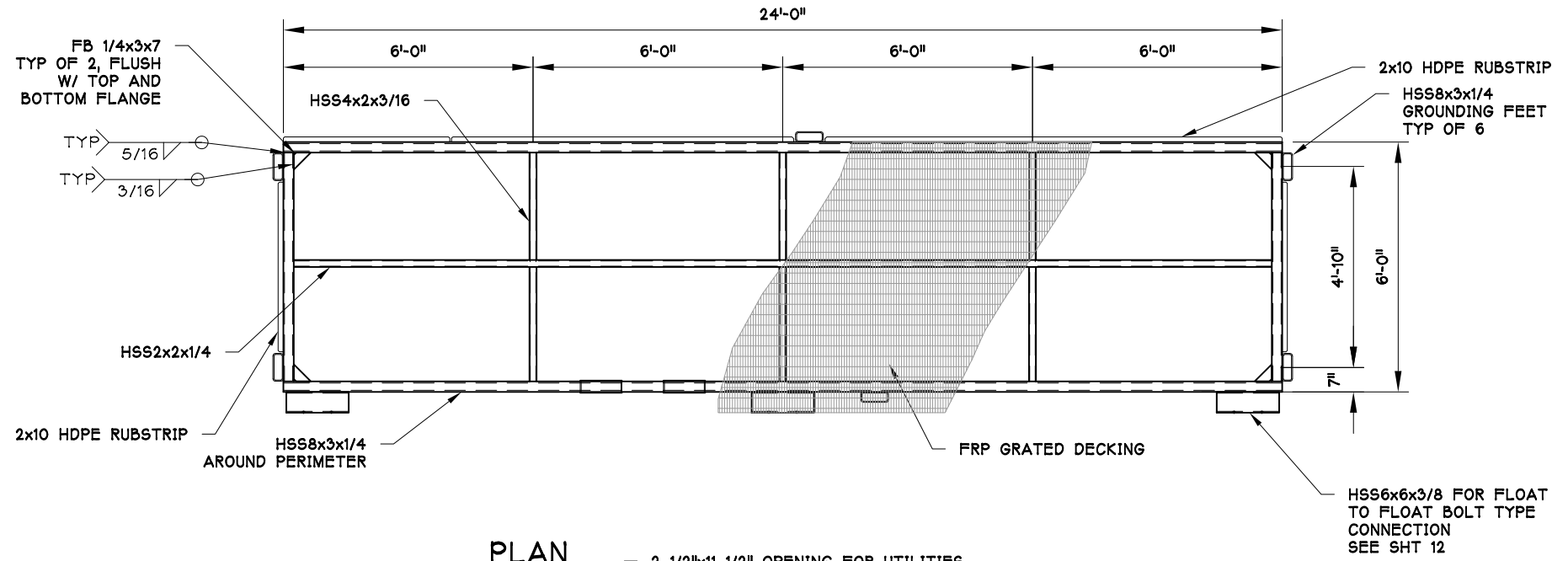
P.O. BOX 1169
ANACORTES
WASHINGTON
U.S.A. 98221
(360) 293-8888

CHELAN BAY
COMMERCIAL DOCK, CHELAN, WA
8'x40' HEADWALK
FLOAT 3 DETAIL

DATE: JUNE 2022	JOB NO. 2236	SHEET: OF 8	REVISED: -
DRAWN BY: AJD	CHECKED BY: AJD	APPROVED BY: DJJ	

THIS DRAWING IS THE PROPERTY OF AND CONTAINS INFORMATION WHICH BELONGS TO TRANSPAC MARINAS, INC. IT IS BEING LOANED WITH THE UNDERSTANDING THAT IT MAY NOT BE REPRODUCED OR USED IN ANY WAY THAT WOULD BE INJURIOUS TO TRANSPAC'S INTERESTS. DETAILS MAY BE PROTECTED UNDER ONE OR MORE OF THE FOLLOWING U.S. PATENTS: 4,709,647 -4,887,654 -4,940,021 -5,347,948 -5,529,012 -6,450,737 -7,390,141 -8,136,468 -8,287,208 -8,308,397 -8,317,429 -8,506,205

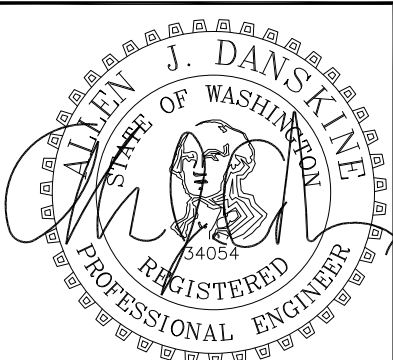
6/23/2022



PLAN
SIDE ELEVATION
GANGWAY FLOAT DETAIL

NOTES:
 COATING: HOT DIP GALVANIZE AFTER FABRICATION.
 MATERIALS:
 HSS - A500B
 SHAPES AND PLATES - A36
 BOLTS - A325

DRAWING Not For Distribution



6/23/2022

THIS DRAWING IS THE PROPERTY OF AND CONTAINS INFORMATION WHICH BELONGS TO TRANSPAC MARINAS, INC. IT IS BEING LOANED WITH THE UNDERSTANDING THAT IT MAY NOT BE REPRODUCED OR USED IN ANY WAY THAT WOULD BE INJURIOUS TO TRANSPAC'S INTERESTS. DETAILS MAY BE PROTECTED UNDER ONE OR MORE OF THE FOLLOWING U.S. PATENTS: 4,709,647 -4,887,654 -4,940,021 -5,347,948 -5,529,012 -6,450,737 -7,390,141 -8,136,468 -8,287,208 -8,308,397 -8,317,429 -8,506,205

REV	BY	DATE	DESCRIPTION

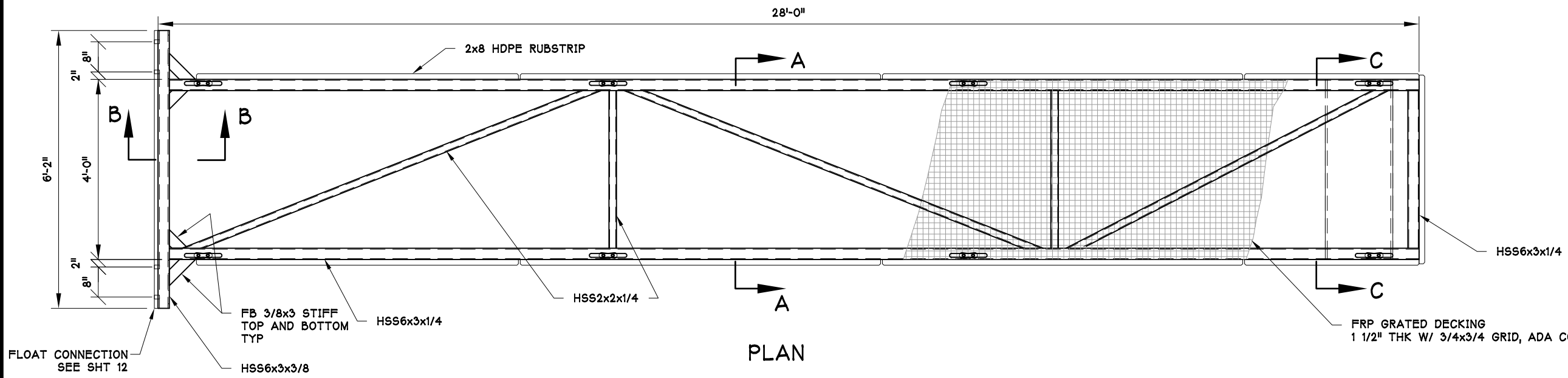
AJD
ENGINEERING
 p (360) 770-1746
 f (360) 766-6013
 allen@ajdengineering.com

P.O. BOX 1169
 ANACORTES
 WASHINGTON
 U.S.A. 98221
 (360) 293-8888

FOR SUBMITTAL 6/23/2022

CHELAN BAY
 COMMERCIAL DOCK, CHELAN, WA
 8'x20' GANGWAY FLOAT
 DETAIL

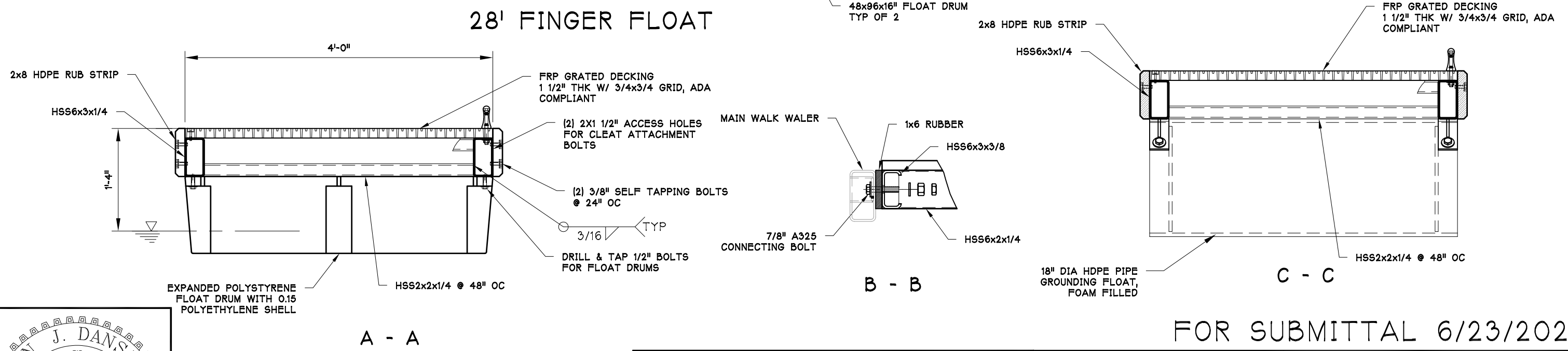
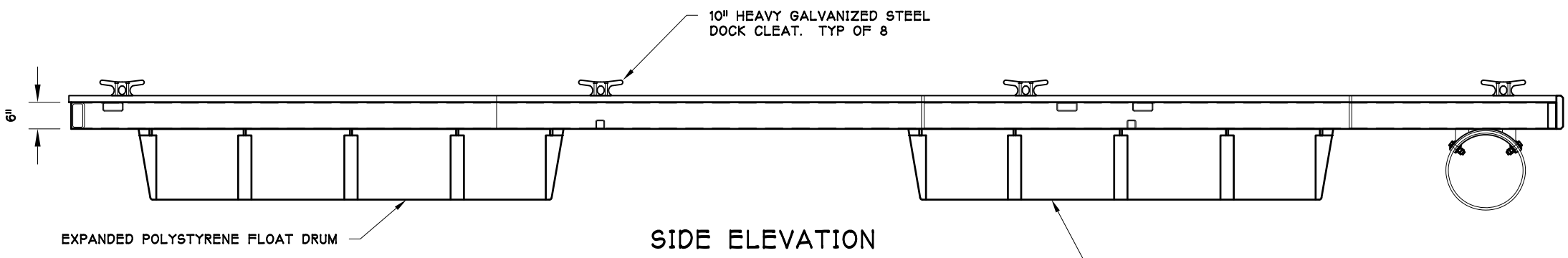
DATE: JUNE 2022	JOB NO. 2236	SHEET: OF 9	REVISED: -
DRAWN BY: AJD	CHECKED BY: AJD	APPROVED BY: DJJ	



NOTES:
 COATING: HOT DIP GALVANIZE AFTER FABRICATION
 IN ACCORDANCE WITH ASTM A 123 AND ASTM A 153.
 TO A MINIMUM OF 2.0 OZ./SQ.FT

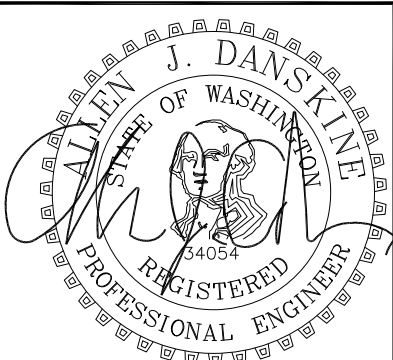
DEAD LOAD FREEBOARD: 18" +/-
 LIVE LOAD FREEBOARD: 2" AT 25 PSF

MATERIALS:
 SHAPES AND PLATES - A36
 HSS - A500B
 BOLTS - A325, A307
 HDPE PIPE: GRADE 4710 (PE3408) PER ASTM 03350,
 SDR 32.5.
 FLOTATION FOAM: VACUUM-MOLDED, RIGID CELLULAR
 EXPANDED POLYSTYRENE, 1.0 LB/CF
 FLOAT DRUM: ROTATIONALLY-MOLDED
 POLYETHYLENE, WITH MINIMUM WALL THICKNESS OF
 0.15". FOAM CORE IS CELLULAR POLYSTYRENE 1.0
 LB PER CF PER ASTM C-578-85



FOR SUBMITTAL 6/23/2022

DRAWING Not For Distribution



THIS DRAWING IS THE PROPERTY OF AND CONTAINS INFORMATION WHICH BELONGS TO TRANSPAC MARINAS, INC. IT IS BEING LOANED WITH THE UNDERSTANDING THAT IT MAY NOT BE REPRODUCED OR USED IN ANY WAY THAT WOULD BE INJURIOUS TO TRANSPAC'S INTERESTS. DETAILS MAY BE PROTECTED UNDER ONE OR MORE OF THE FOLLOWING U.S. PATENTS: 4,709,647 -4,887,654 -4,940,021 -5,347,948 -5,529,012 -6,450,737 -7,390,141 -8,136,468 -8,287,208 -8,308,397 -8,317,429 -8,506,205

REV	BY	DATE	DESCRIPTION

AJD
ENGINEERING

p (360) 770-1746
f (360) 766-6013
allen@ajdengineering.com

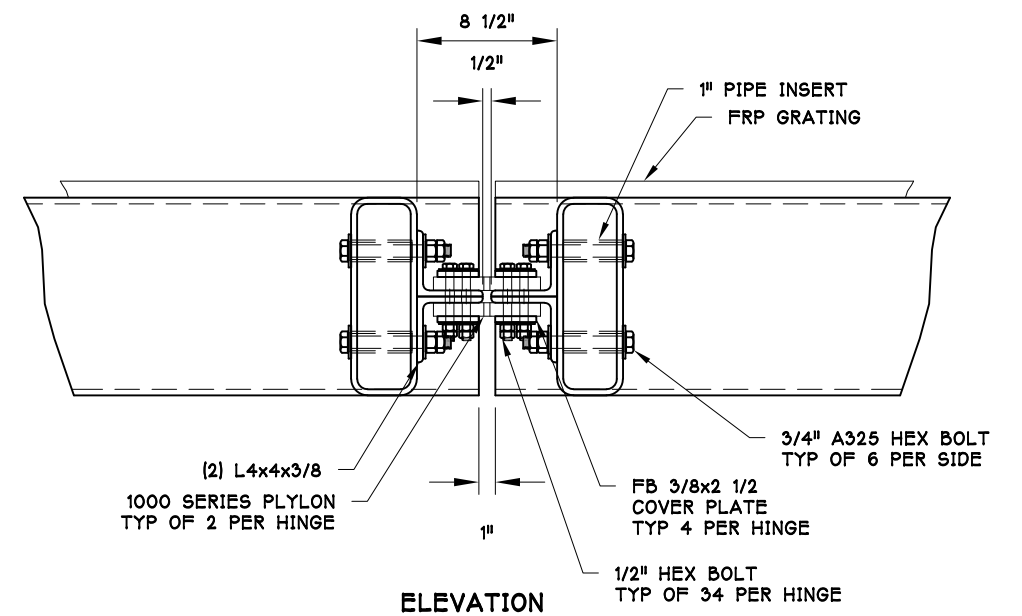
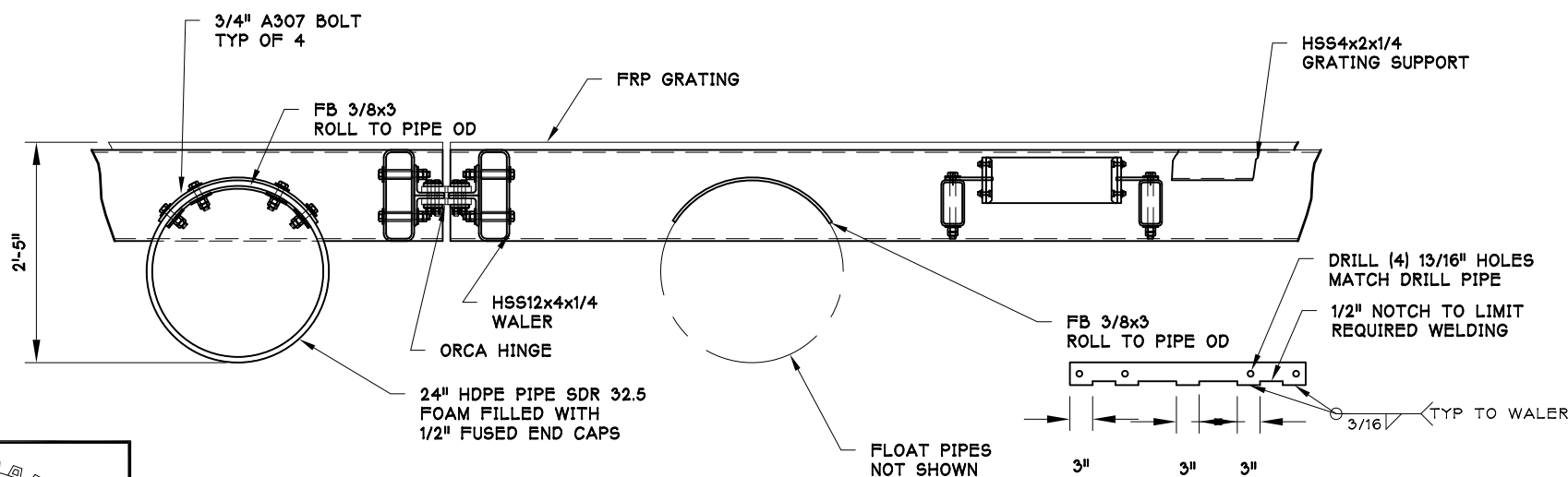
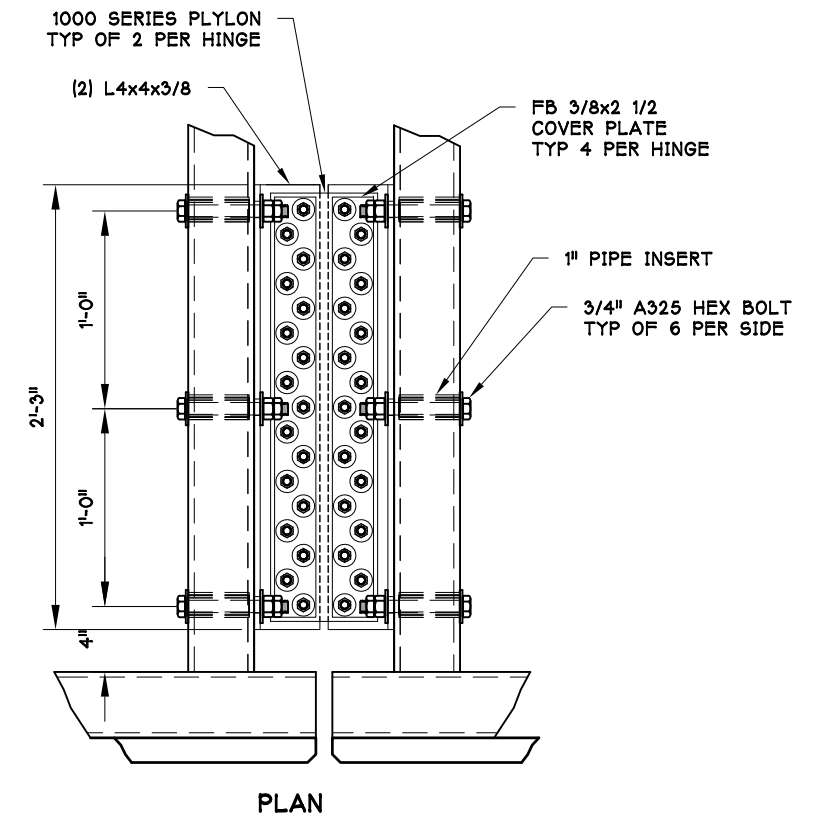
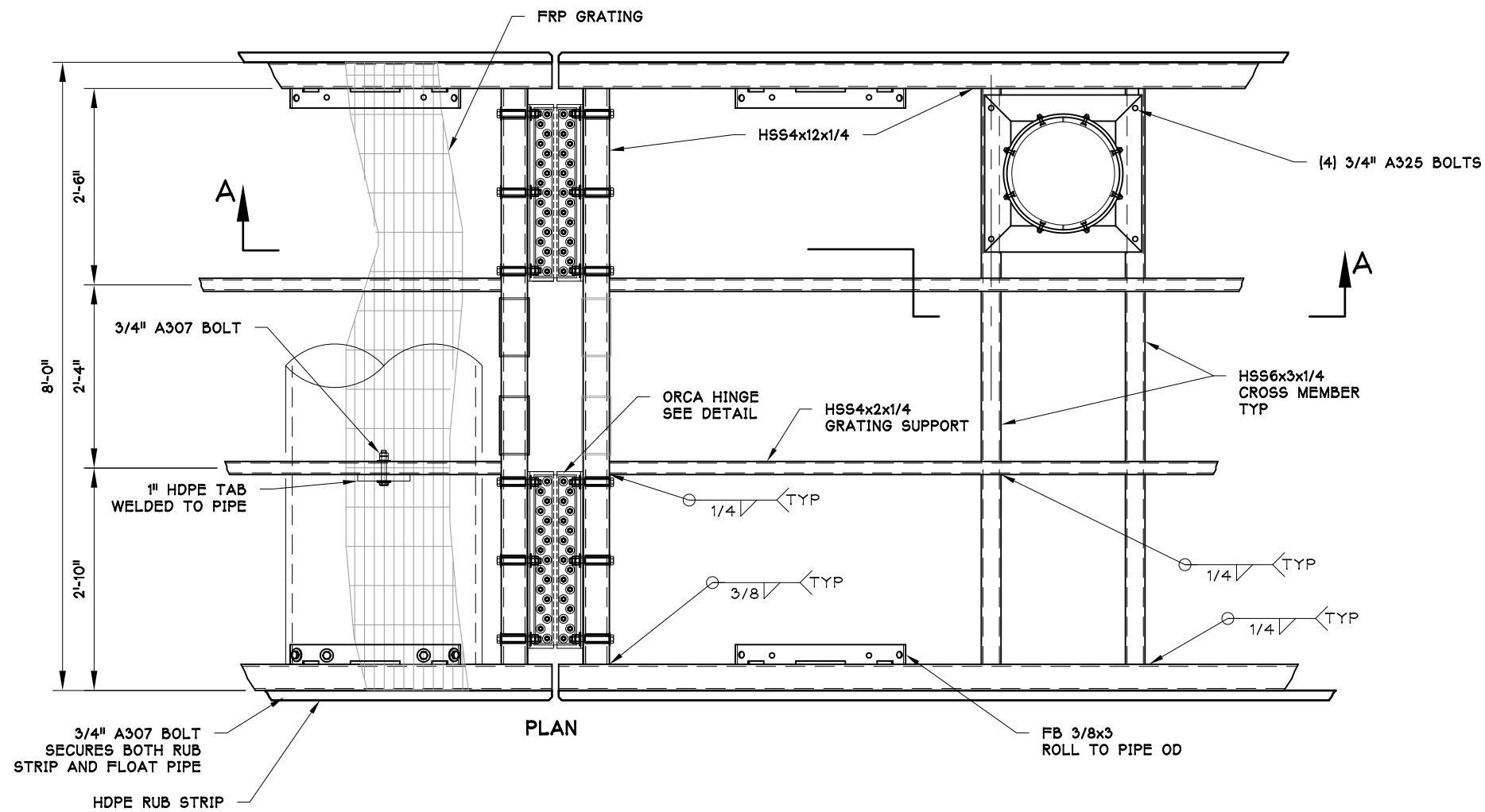
TRANSPAC
MARINAS

P.O. BOX 1169
ANACORTES
WASHINGTON
U.S.A. 98221
(360) 293-8888

CHELAN BAY
COMMERCIAL DOCK, CHELAN, WA
4'x28' FINGER FLOAT
DETAIL

DATE: JUNE 2022	JOB NO. 2236	SHEET: 10	OF 1	REVISED: -
DRAWN BY: AJD		CHECKED BY: AJD		APPROVED BY: DJJ

6/23/2022

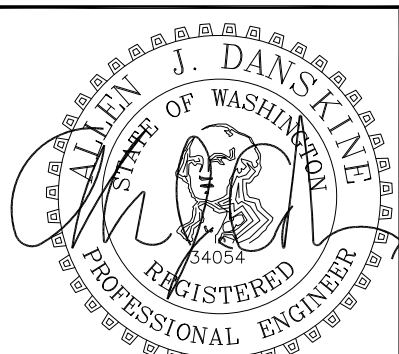


TYPICAL MAINWALK/ATTENUATOR FLOAT CONNECTION

ORCA HINGE DETAIL

FOR SUBMITTAL 6/23/2022

DRAWING Not For Distribution



THIS DRAWING IS THE PROPERTY OF AND CONTAINS INFORMATION WHICH BELONGS TO TRANSPAC MARINAS, INC. IT IS BEING LOANED WITH THE UNDERSTANDING THAT IT MAY NOT BE REPRODUCED OR USED IN ANY WAY THAT WOULD BE INJURIOUS TO TRANSPAC'S INTERESTS. DETAILS MAY BE PROTECTED UNDER ONE OR MORE OF THE FOLLOWING U.S. PATENTS: 4,709,647 -4,887,654 -4,940,021 -5,347,948 -5,529,012 -6,450,737 -7,390,141 -8,136,468 -8,287,208 -8,308,397 -8,317,429 -8,506,205

REV	BY	DATE	DESCRIPTION

AJD
ENGINEERING

p (360) 770-1746
f (360) 766-6013
allen@ajdengineering.com

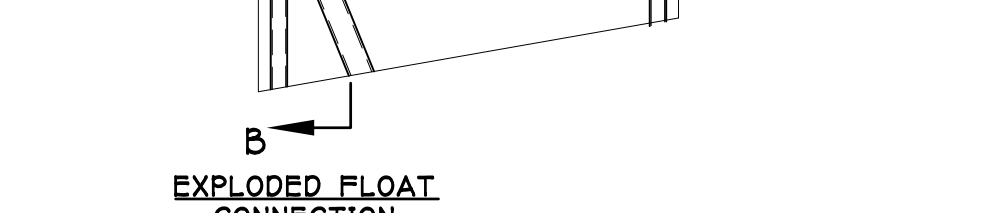
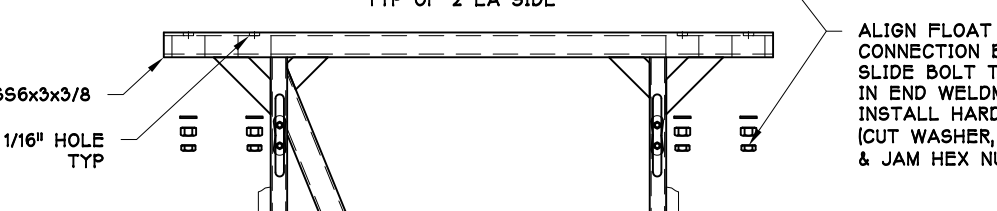
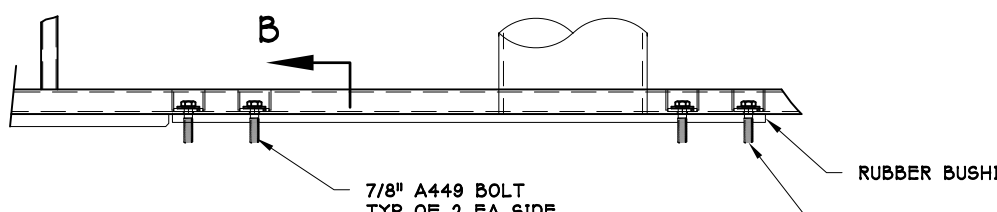
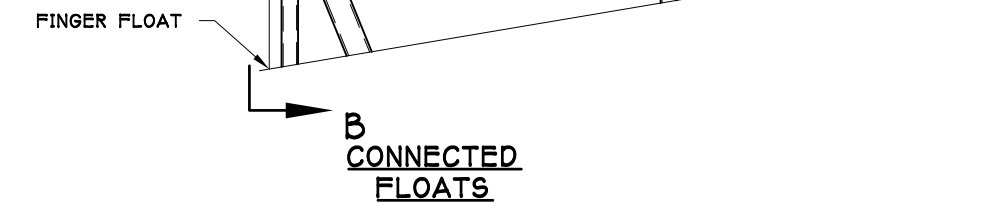
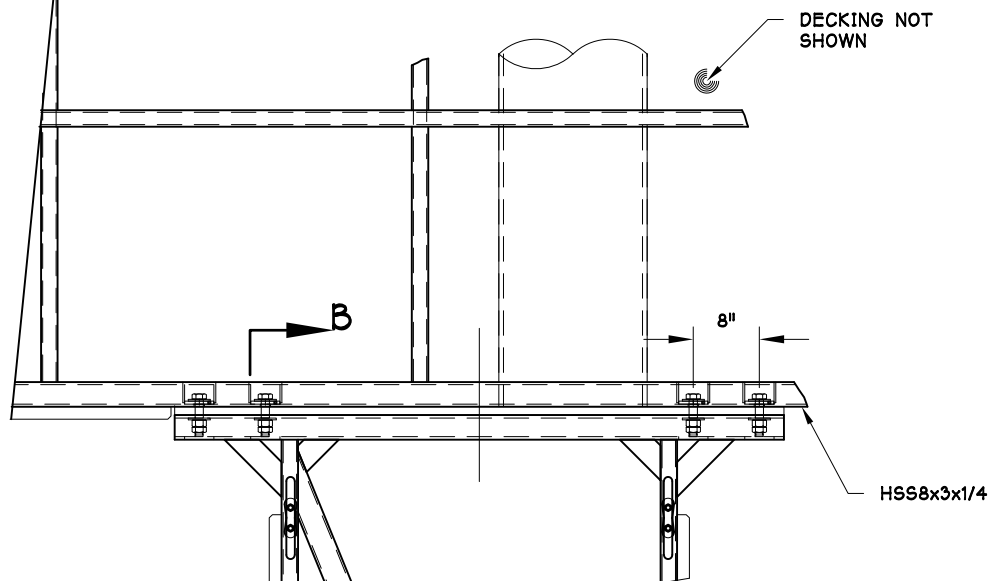
TRANSPAC
MARINAS

P.O. BOX 1169
ANACORTES
WASHINGTON
U.S.A. 98221
(360) 293-8888

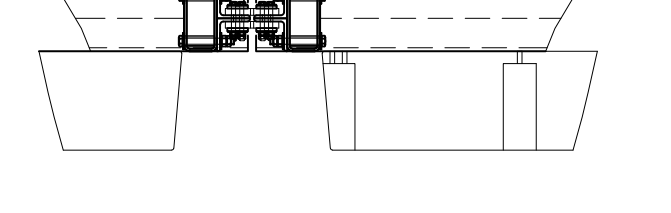
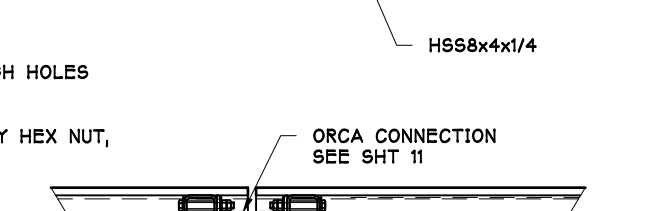
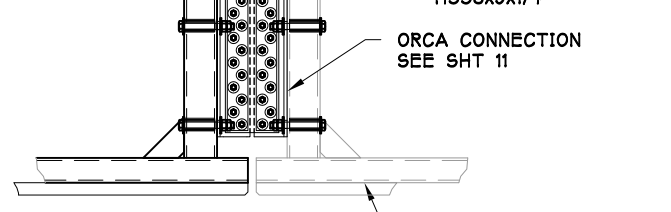
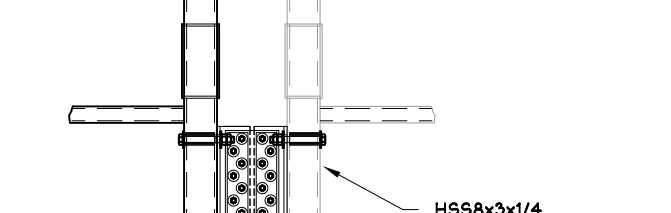
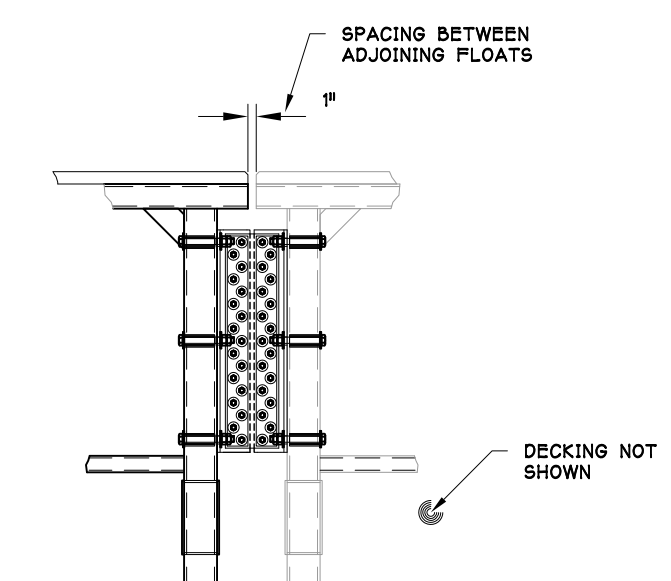
CHELAN BAY
COMMERCIAL DOCK, CHELAN, WA
ORCA CONNECTION
DETAIL

DATE: JUNE 2022	JOB NO. 2236	SHEET: 11 OF 11	REVISED: -
DRAWN BY: AJD	CHECKED BY: AJD	APPROVED BY: DJJ	

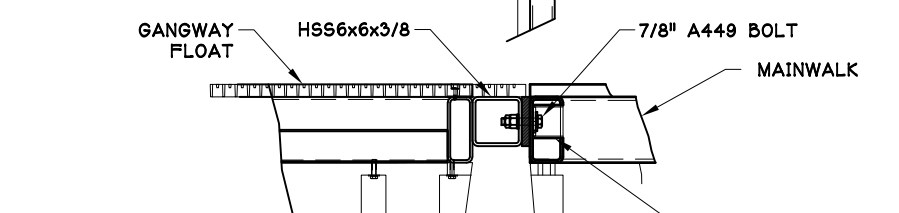
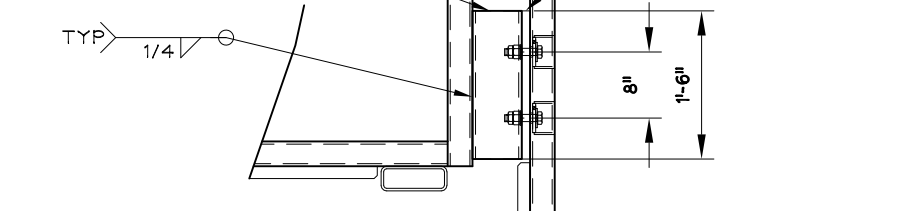
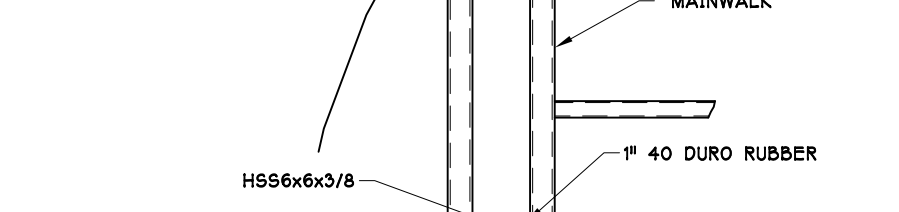
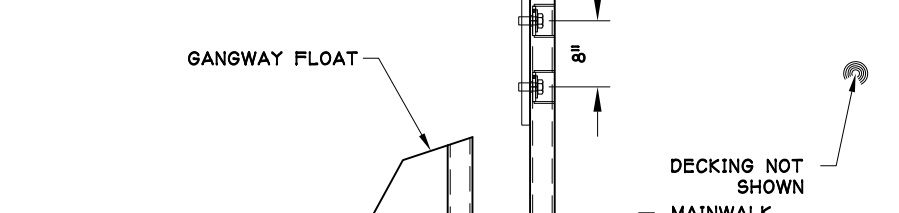
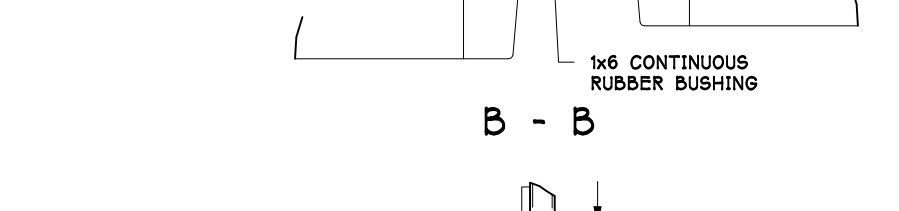
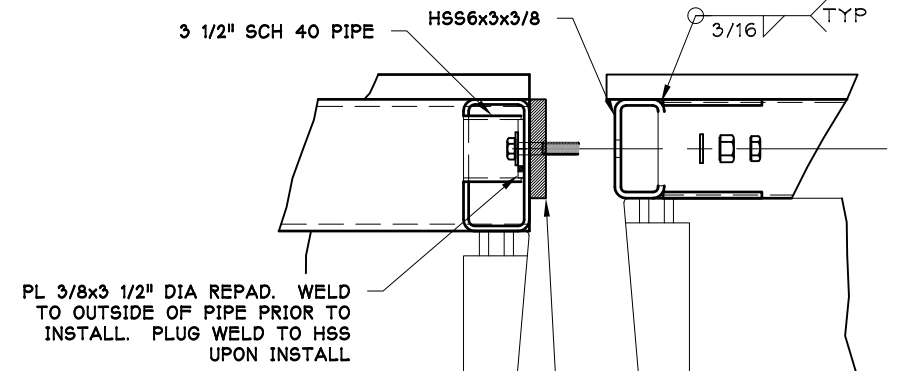
6/23/2022



TYPICAL FINGER TO MAIN WALK CONNECTION



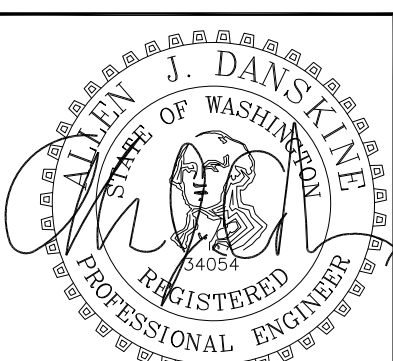
TYPICAL MAINWALK TO MAINWALK CONNECTION



TYPICAL MAINWALK TO GANGWAY CONNECTION

FOR SUBMITTAL 6/23/2022

DRAWING Not For Distribution



THIS DRAWING IS THE PROPERTY OF AND CONTAINS INFORMATION WHICH BELONGS TO TRANSPAC MARINAS, INC. IT IS BEING LOANED WITH THE UNDERSTANDING THAT IT MAY NOT BE REPRODUCED OR USED IN ANY WAY THAT WOULD BE INJURIOUS TO TRANSPAC'S INTERESTS. DETAILS MAY BE PROTECTED UNDER ONE OR MORE OF THE FOLLOWING U.S. PATENTS: 4,709,647 -4,887,654 -4,940,021 -5,347,948 -5,529,012 -6,450,737 -7,390,141 -8,136,468 -8,287,208 -8,308,397 -8,317,429 -8,506,205

REV	BY	DATE	DESCRIPTION

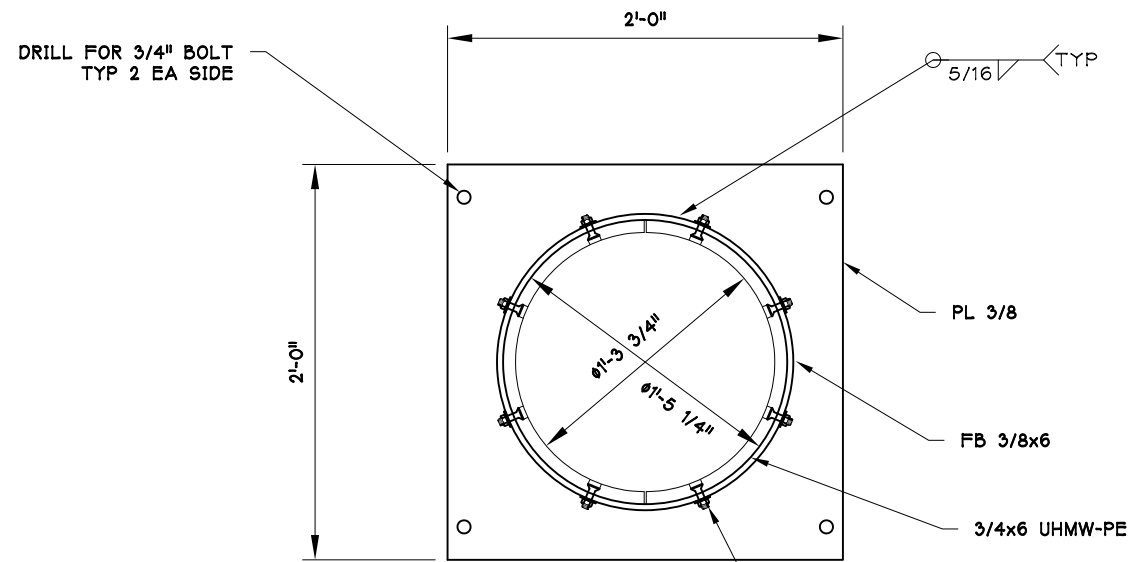
AJD
ENGINEERING
p (360) 770-1746
f (360) 766-6013
allen@ajdengineering.com

TRANSPAC
MARINAS
P.O. BOX 1169
ANACORTES
WASHINGTON
U.S.A. 98221
(360) 293-8888

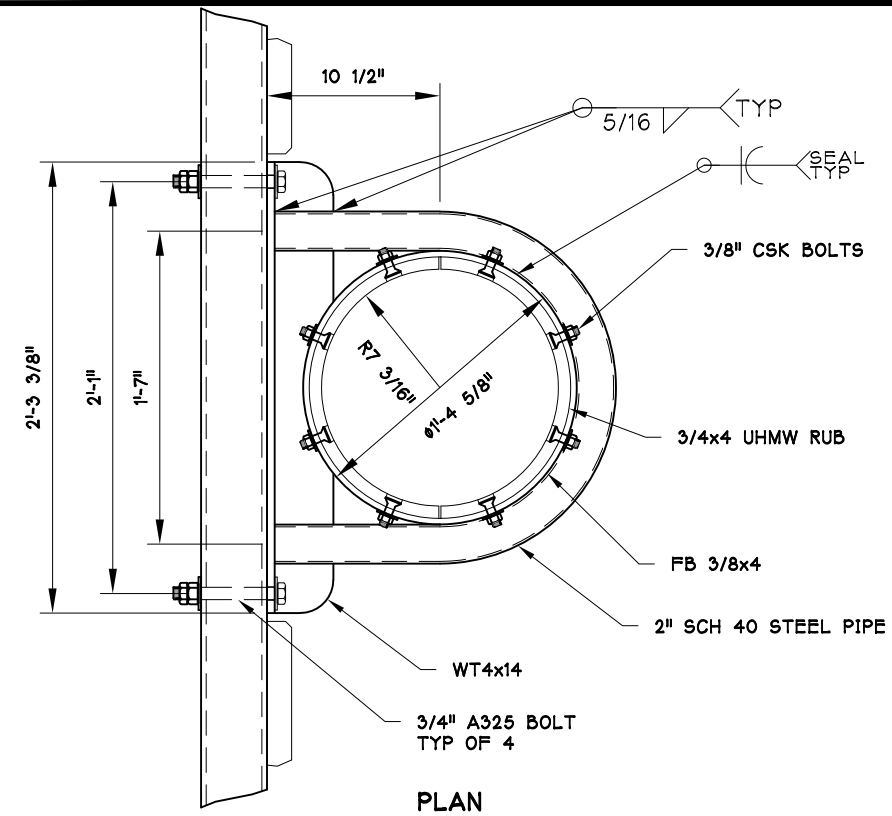
CHELAN BAY
COMMERCIAL DOCK, CHELAN, WA
MAINWALK CONNECTION
DETAIL

DATE: JUNE 2022	JOB NO. 2236	SHEET: 12 OF 12	REVISED: -
DRAWN BY: AJD	CHECKED BY: AJD	APPROVED BY: DJJ	

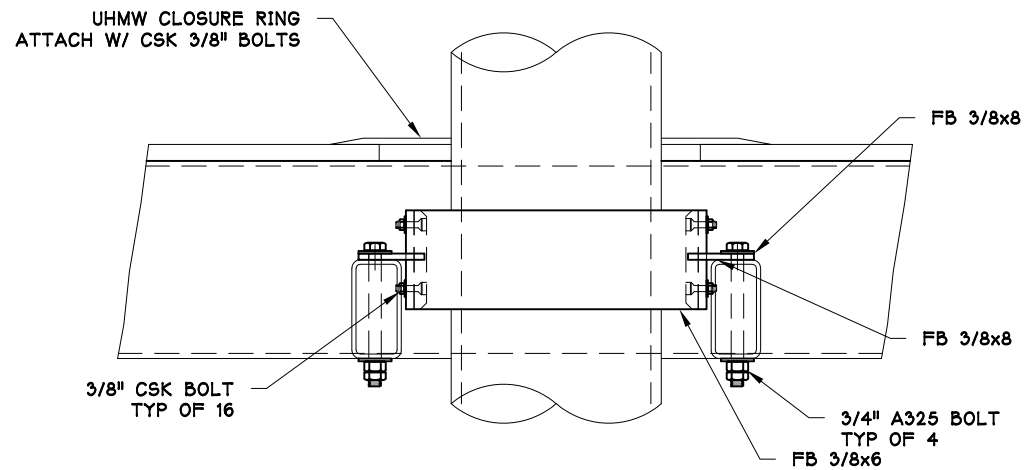
6/23/2022



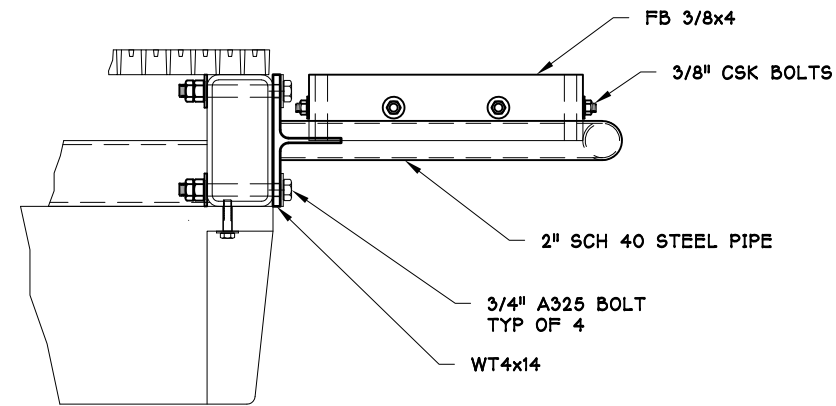
PLAN



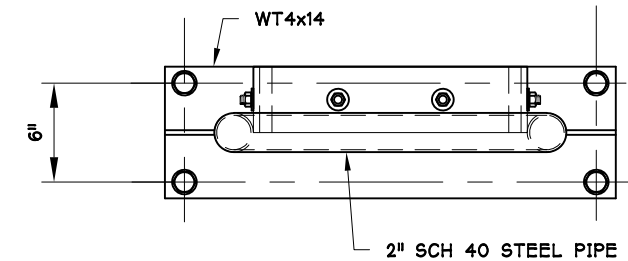
PLAN



FRONT ELEVATION



SIDE ELEVATION

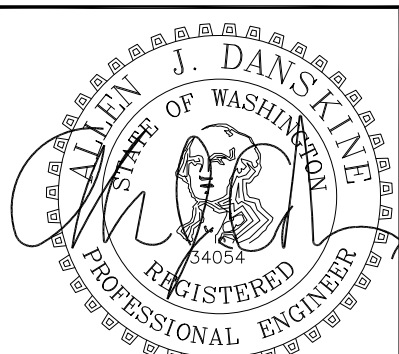


FRONT ELEVATION

INTERNAL 12" PILE HOOP

12" EXTERNAL PILE HOOP DETAIL

DRAWING Not For Distribution



6/23/2022

THIS DRAWING IS THE PROPERTY OF AND CONTAINS INFORMATION WHICH BELONGS TO TRANSPAC MARINAS, INC. IT IS BEING LOANED WITH THE UNDERSTANDING THAT IT MAY NOT BE REPRODUCED OR USED IN ANY WAY THAT WOULD BE INJURIOUS TO TRANSPAC'S INTERESTS. DETAILS MAY BE PROTECTED UNDER ONE OR MORE OF THE FOLLOWING U.S. PATENTS: 4,709,647 -4,887,654 -4,940,021 -5,347,948 -5,529,012 -6,450,737 -7,390,141 -8,136,468 -8,287,208 -8,308,397 -8,317,429 -8,506,205

REV	BY	DATE	DESCRIPTION

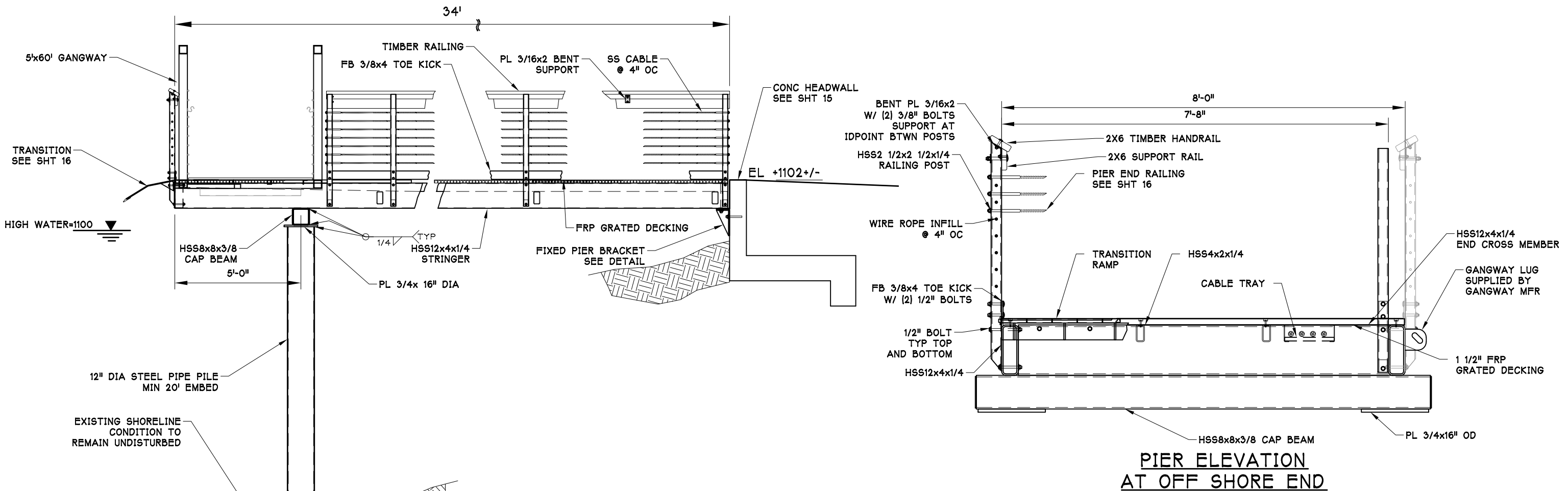
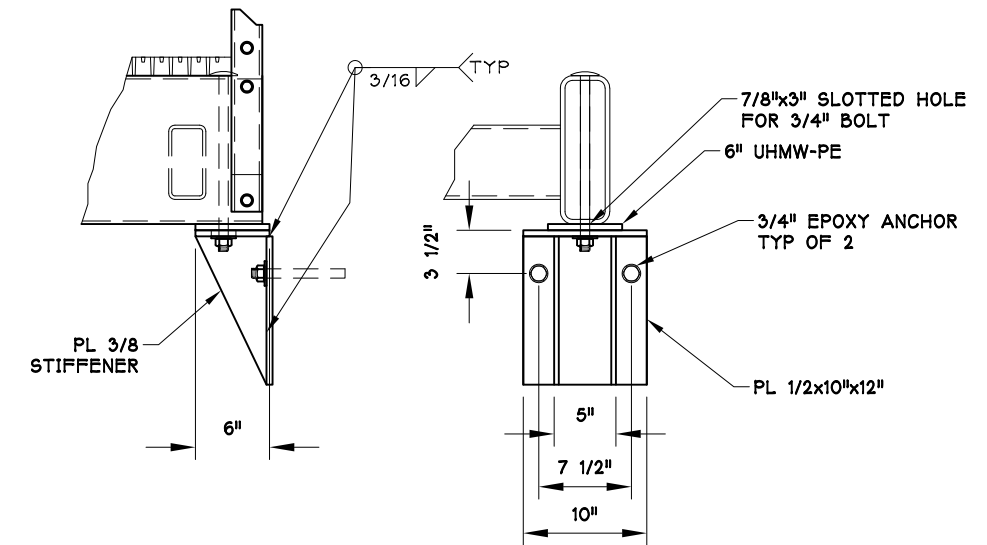
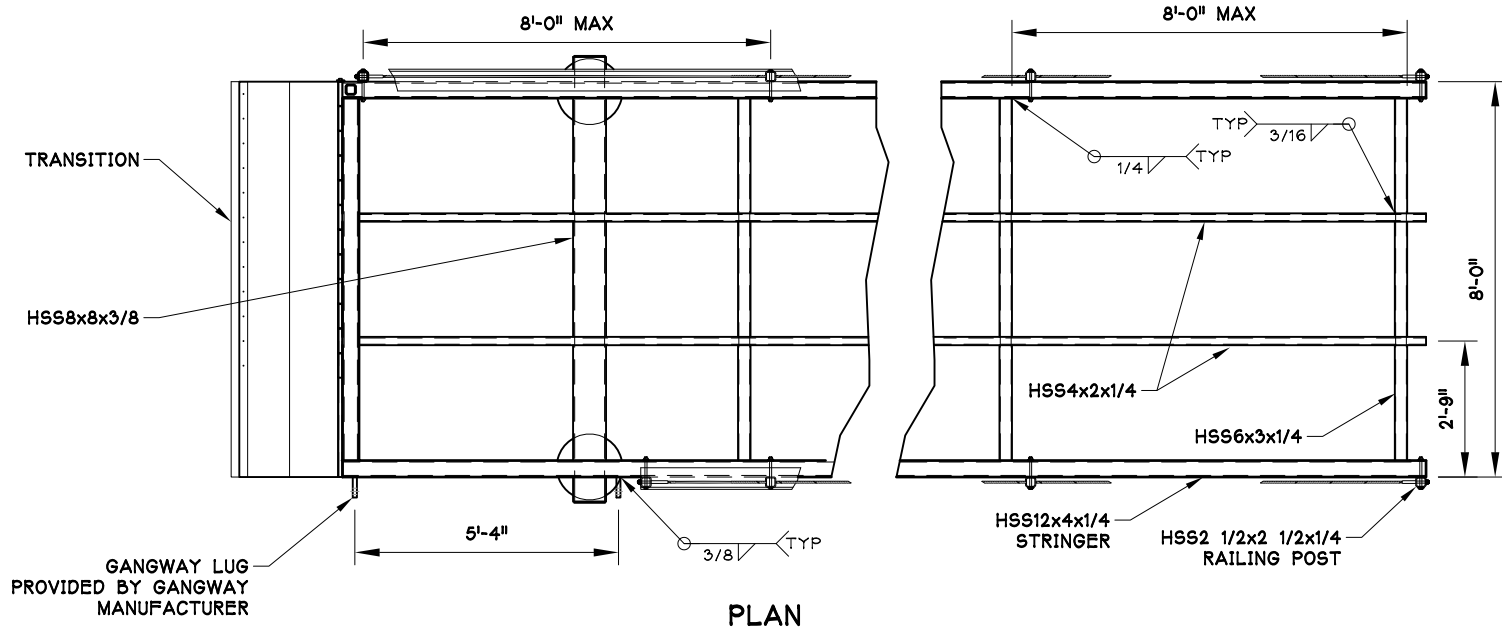
AJD
ENGINEERING
p (360) 770-1746
f (360) 766-6013
allen@ajdengineering.com

TRANSPAC
MARINAS
P.O. BOX 1169
ANACORTES
WASHINGTON
U.S.A. 98221
(360) 293-8888

FOR SUBMITTAL 6/23/2022

CHELAN BAY
COMMERCIAL DOCK, CHELAN, WA
PILE HOOP
DETAILS

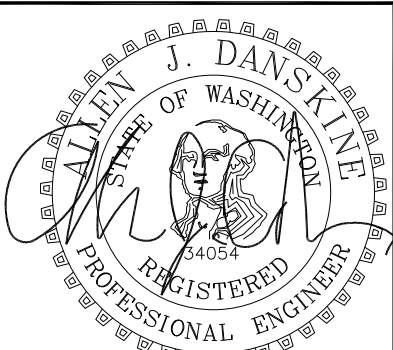
DATE: JUNE 2022	JOB NO. 2236	SHEET: 13 OF 13	REVISED: -
DRAWN BY: AJD	CHECKED BY: AJD	APPROVED BY: DJJ	



SIDE ELEVATION FIXED PIER

FOR SUBMITTAL 6/23/2022

DRAWING Not For Distribution



THIS DRAWING IS THE PROPERTY OF AND CONTAINS INFORMATION WHICH BELONGS TO TRANSPAC MARINAS, INC. IT IS BEING LOANED WITH THE UNDERSTANDING THAT IT MAY NOT BE REPRODUCED OR USED IN ANY WAY THAT WOULD BE INJURIOUS TO TRANSPAC'S INTERESTS. DETAILS MAY BE PROTECTED UNDER ONE OR MORE OF THE FOLLOWING U.S. PATENTS: 4,709,647 -4,887,654 -4,940,021 -5,347,948 -5,529,012 -6,450,737 -7,390,141 -8,136,468 -8,287,208 -8,308,397 -8,317,429 -8,506,205

REV	BY	DATE	DESCRIPTION

AJD
ENGINEERING

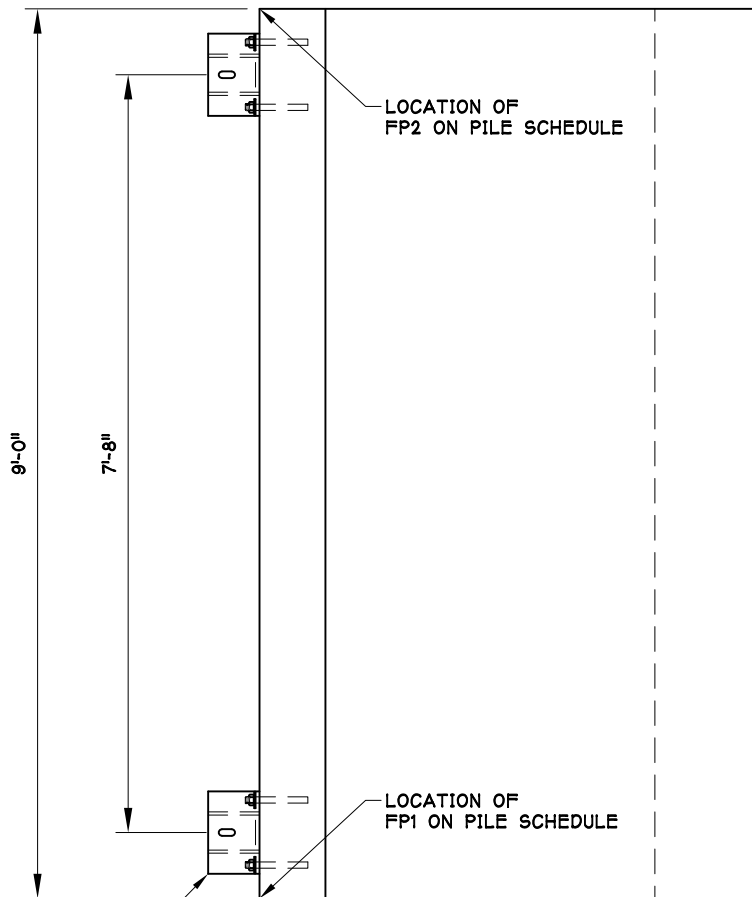
p (360) 770-1746
f (360) 766-6013
allen@ajdengineering.com

TRANSPAC
MARINAS

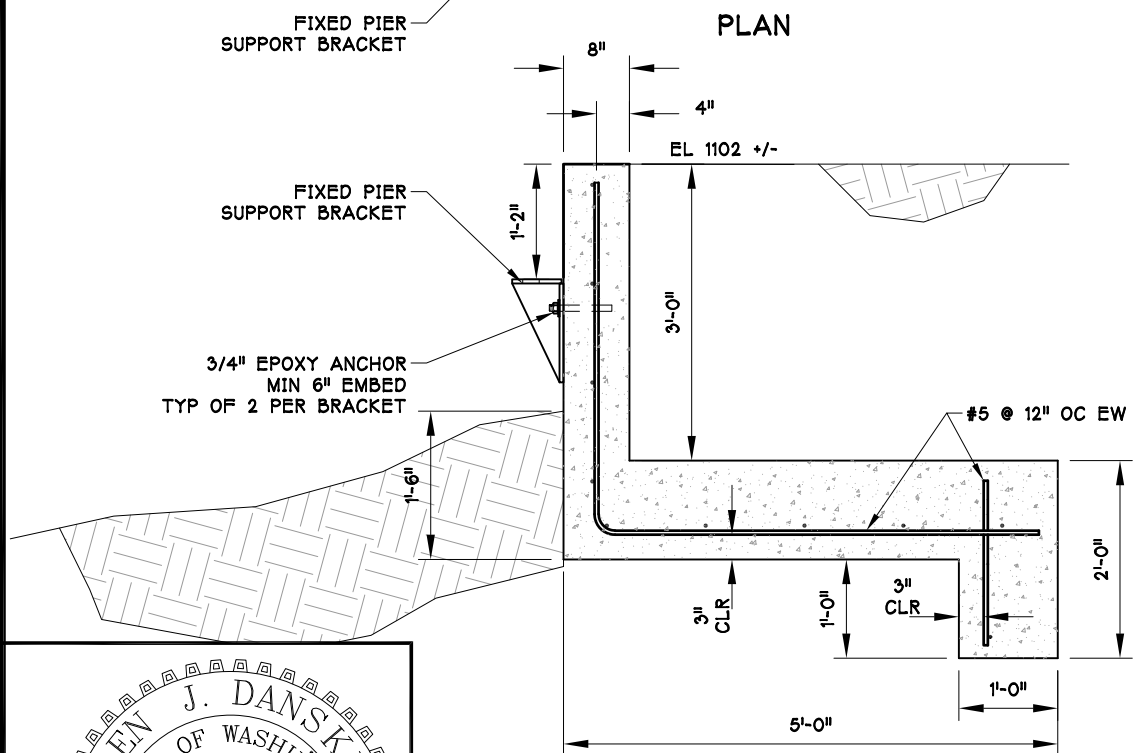
P.O. BOX 1169
ANACORTES
WASHINGTON
U.S.A. 98221
(360) 293-8888

CHELAN BAY
COMMERCIAL DOCK, CHELAN, WA
FIXED PIER
DETAILS

DATE: JUNE 2022	JOB NO. 2236	SHEET: 14	OF ^	REVISED: -
DRAWN BY: AJD		CHECKED BY: AJD		APPROVED BY: DJJ



FIXED PIER SUPPORT BRACKET
PLAN

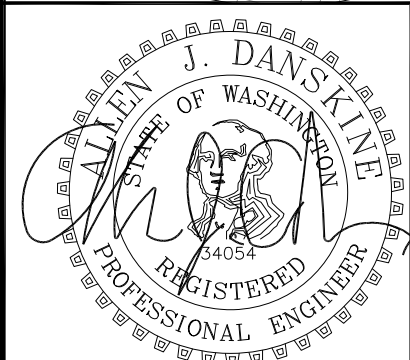


TYPICAL SECTION
FIXED PIER ABUTMENT

NOTES:
 CONCRETE $F'_c = 3,000$ PSI
 REINFORCING $F_y = 60,000$ PSI

FOR SUBMITTAL 6/23/2022

DRAWING Not For Distribution



6/23/2022

THIS DRAWING IS THE PROPERTY OF AND CONTAINS INFORMATION WHICH BELONGS TO TRANSPAC MARINAS, INC. IT IS BEING LOANED WITH THE UNDERSTANDING THAT IT MAY NOT BE REPRODUCED OR USED IN ANY WAY THAT WOULD BE INJURIOUS TO TRANSPAC'S INTERESTS. DETAILS MAY BE PROTECTED UNDER ONE OR MORE OF THE FOLLOWING U.S. PATENTS: 4,709,647 -4,887,654 -4,940,021 -5,347,948 -5,529,012 -6,450,737 -7,390,141 -8,136,468 -8,287,208 -8,308,397 -8,317,429 -8,506,205

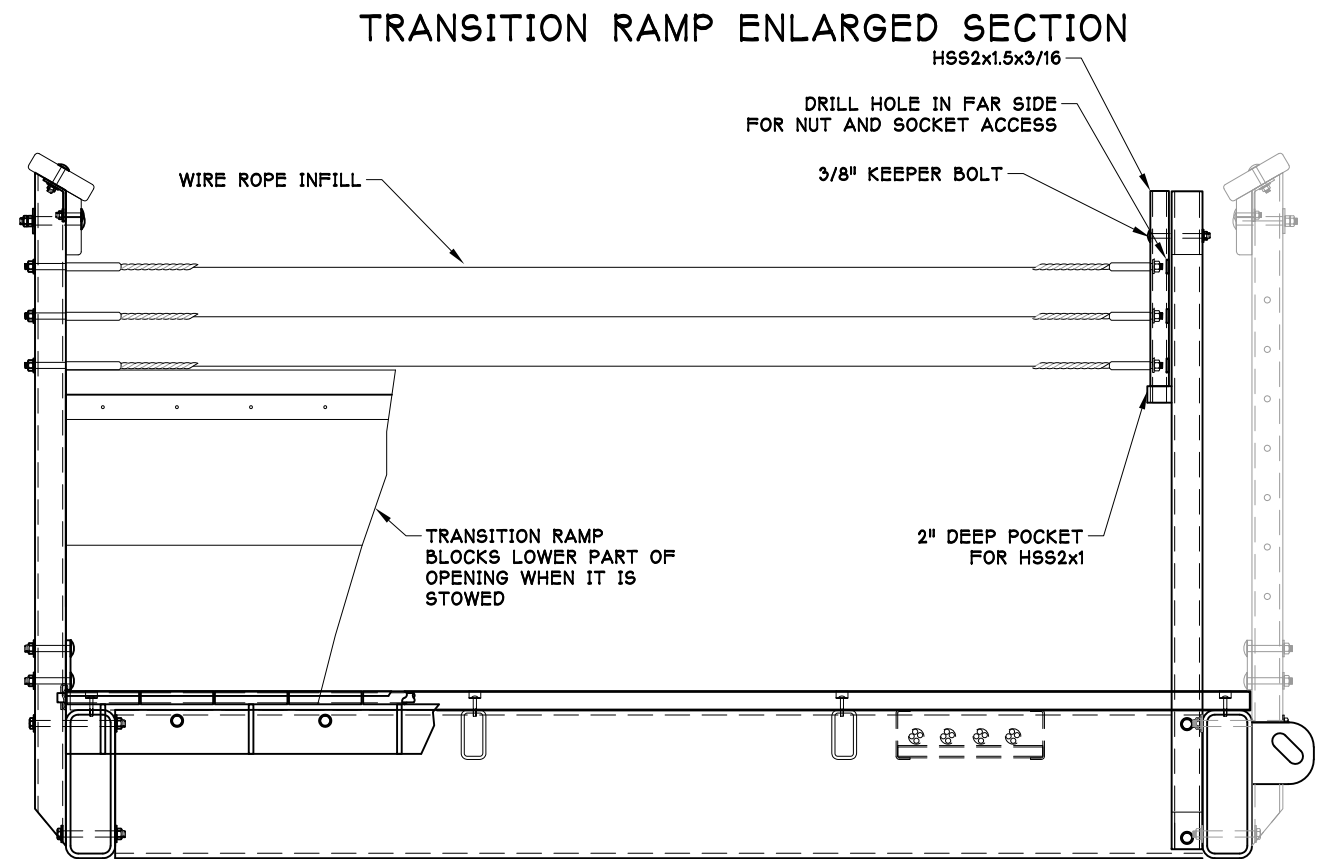
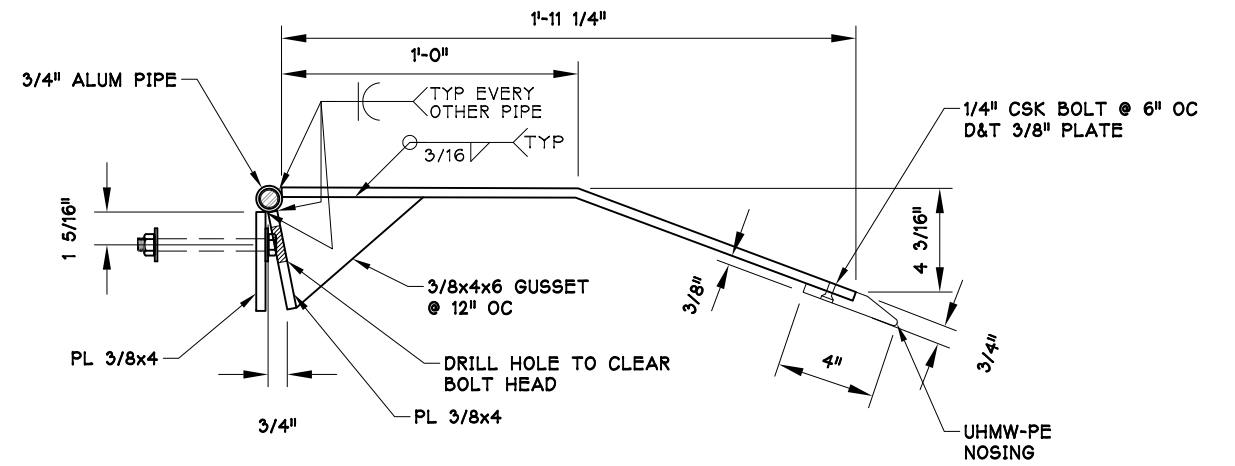
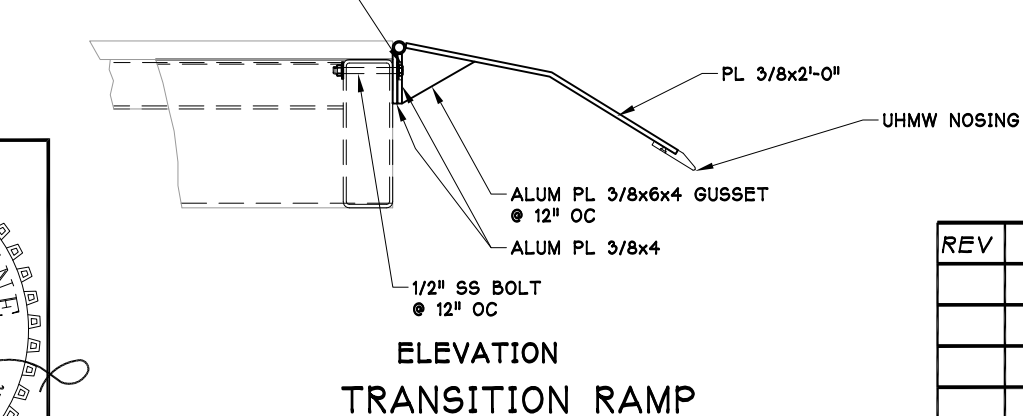
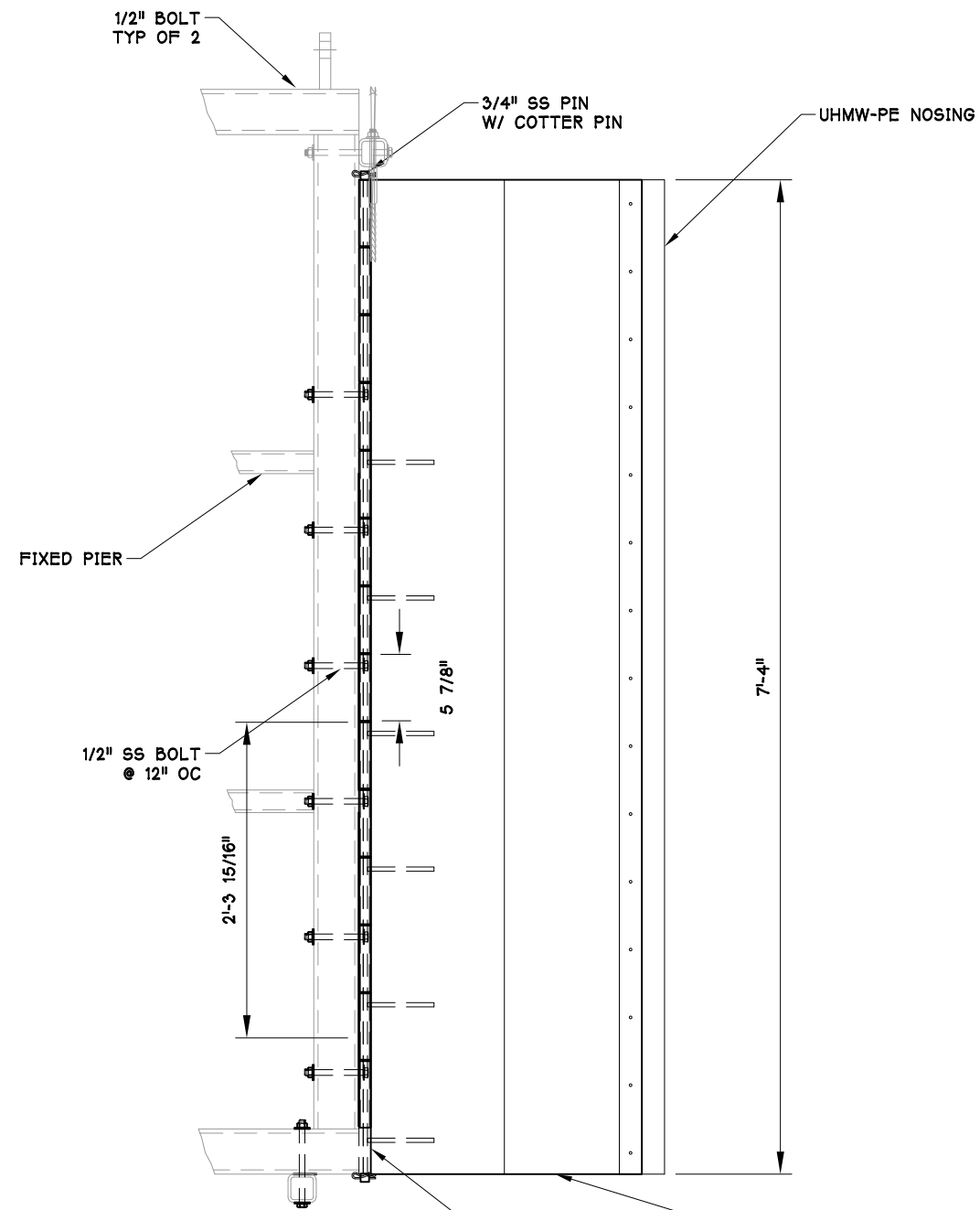
REV	BY	DATE	DESCRIPTION

AJD
ENGINEERING
 p (360) 770-1746
 f (360) 766-6013
 allen@ajdengineering.com

TRANSPAC
MARINAS
 P.O. BOX 1169
 ANACORTES
 WASHINGTON
 U.S.A. 98221
 (360) 293-8888

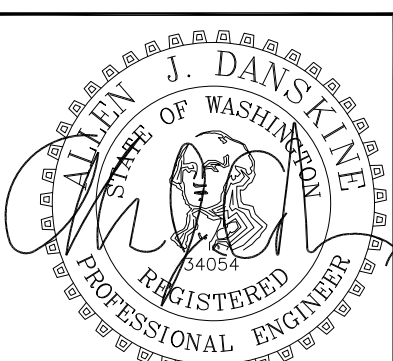
CHELAN BAY
 COMMERCIAL DOCK, CHELAN, WA
 FIXED PIER ABUTMENT

DATE: JUNE 2022	JOB NO. 2236	SHEET: OF 15 ^	REVISED: -
DRAWN BY: AJD		CHECKED BY: AJD	APPROVED BY: DJJ



ELEVATION PIER END RAILING

FOR SUBMITTAL 6/23/2022



DRAWING Not For Distribution

REV	BY	DATE	DESCRIPTION

AJD
ENGINEERING

p (360) 770-1746
f (360) 766-6013
allen@ajdengineering.com

TRANSPAC
MARINAS

P.O. BOX 1169
ANACORTES
WASHINGTON
U.S.A. 98221
(360) 293-8888

CHELAN BAY
COMMERCIAL DOCK, CHELAN, WA
FIXED PIER
TRANSITION RAMP

DATE: JUNE 2022	JOB NO. 2236	SHEET: 16	OF 16	REVISED: -
DRAWN BY: AJD		CHECKED BY: AJD		APPROVED BY: DJJ

THIS DRAWING IS THE PROPERTY OF AND CONTAINS INFORMATION WHICH BELONGS TO TRANSPAC MARINAS, INC. IT IS BEING LOANED WITH THE UNDERSTANDING THAT IT MAY NOT BE REPRODUCED OR USED IN ANY WAY THAT WOULD BE INJURIOUS TO TRANSPAC'S INTERESTS. DETAILS MAY BE PROTECTED UNDER ONE OR MORE OF THE FOLLOWING U.S. PATENTS: 4,709,647 -4,887,654 -4,940,021 -5,347,948 -5,529,012 -6,450,737 -7,390,141 -8,136,468 -8,287,208 -8,308,397 -8,317,429 -8,506,205

6/23/2022

EL = +1106.0
CUTOFF EL.
"GUIDE PILE"

HIGH LAKE LEVEL = +1100.0

EXISTING MUDLINE
EL 1082 TO 1090 +/-

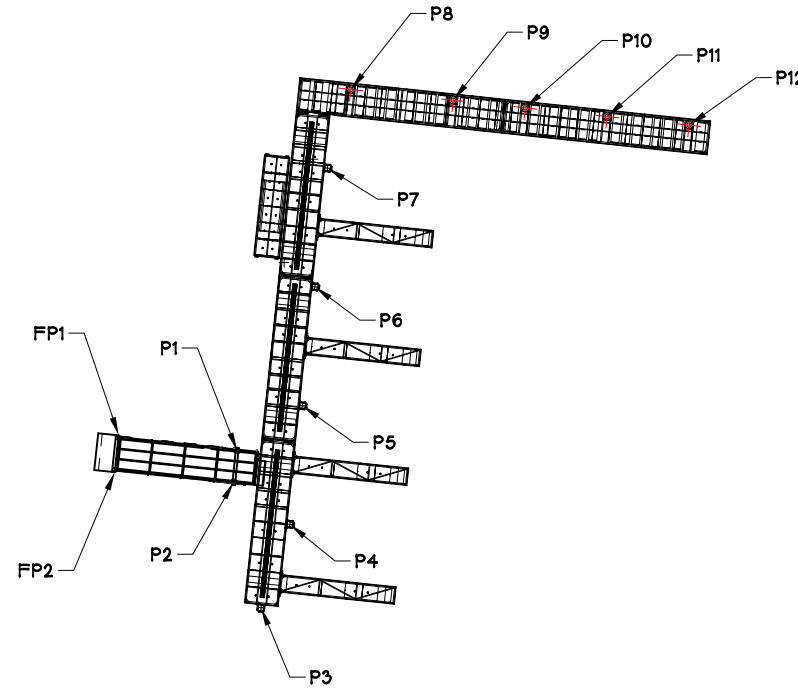
27' EMBED

12" DIAx 3/8" WALL
GALVANIZED PIPE PILE

INSIDE OPEN
CUTTING SHOE

TYPICAL PILE

* FLOAT NOT SHOWN FOR CLARITY



PILE/ABUTMENT SCHEDULE

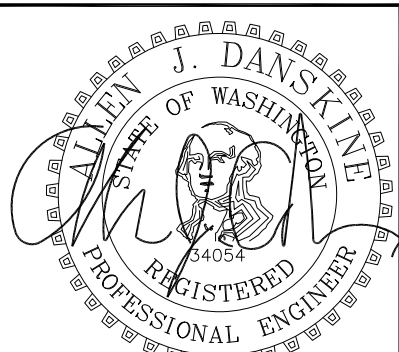
FLOAT #	PILE DIAMETER	PILE Fy	LENGTH	EMBEDMENT	NORTHING	EASTING
FP 1	-	-	-	-	305,576.26	1,835,039.13
FP 2	-	-	-	-	305,567.31	1,835,038.19
P1	12"x3/8"w	35KSI	32'	20'	305,572.51	1,835,067.90
P2	12"x3/8"w	35KSI	32'	20'	305,564.96	1,835,067.10
P3	12"x3/8"w	35KSI	38'	20'	305,534.44	1,835,073.68
P4	12"x3/8"w	35KSI	38'	20'	305,554.65	1,835,080.68
P5	12"x3/8"w	35KSI	42'	20'	305,583.49	1,835,083.72
P6	12"x3/8"w	35KSI	44'	20'	305,612.33	1,835,086.77
P7	12"x3/8"w	35KSI	44'	20'	305,641.17	1,835,089.81
P8	12"x3/8"w	35KSI	46'	20'	305,660.26	1,835,095.51
P9	12"x3/8"w	50KSI	46'	20'	305,657.63	1,835,120.37
P10	12"x3/8"w	35KSI	46'	20'	305,655.79	1,835,137.86
P11	12"x3/8"w	35KSI	46'	20'	305,653.69	1,835,157.75
P12	12"x3/8"w	35KSI	46'	20'	305,651.59	1,835,177.64

NOTES:

1) ASSUMES A WATER ELEVATION OF EL. 1095, MAX WATER LEVEL DURING THE WINTER SEASON AND FULL POOL OF EL. 1100 DURING THE MAY-SEPTEMBER SUMMER SEASON.

2) PILE CUTOFF EL = 1106, BASED ON MAX WATER EL OF 1100.

DRAWING Not For Distribution



6/23/2022

THIS DRAWING IS THE PROPERTY OF AND CONTAINS INFORMATION WHICH BELONGS TO TRANSPAC MARINAS, INC. IT IS BEING LOANED WITH THE UNDERSTANDING THAT IT MAY NOT BE REPRODUCED OR USED IN ANY WAY THAT WOULD BE INJURIOUS TO TRANSPAC'S INTERESTS. DETAILS MAY BE PROTECTED UNDER ONE OR MORE OF THE FOLLOWING U.S. PATENTS: 4,709,647 -4,887,654 -4,940,021 -5,347,948 -5,529,012 -6,450,737 -7,390,141 -8,136,468 -8,287,208 -8,308,397 -8,317,429 -8,506,205

REV	BY	DATE	DESCRIPTION

AJD
ENGINEERING
p (360) 770-1746
f (360) 766-6013
allen@ajdengineering.com

TRANSPAC
MARINAS
P.O. BOX 1169
ANACORTES
WASHINGTON
U.S.A. 98221
(360) 293-8888

FOR SUBMITTAL 6/23/2022

CHELAN BAY
COMMERCIAL DOCK, CHELAN, WA
PILE DETAILS

DATE: JUNE 2022	JOB NO. 2236	SHEET: 17 OF 17	REVISED: -
DRAWN BY: AJD	CHECKED BY: AJD	APPROVED BY: DJJ	